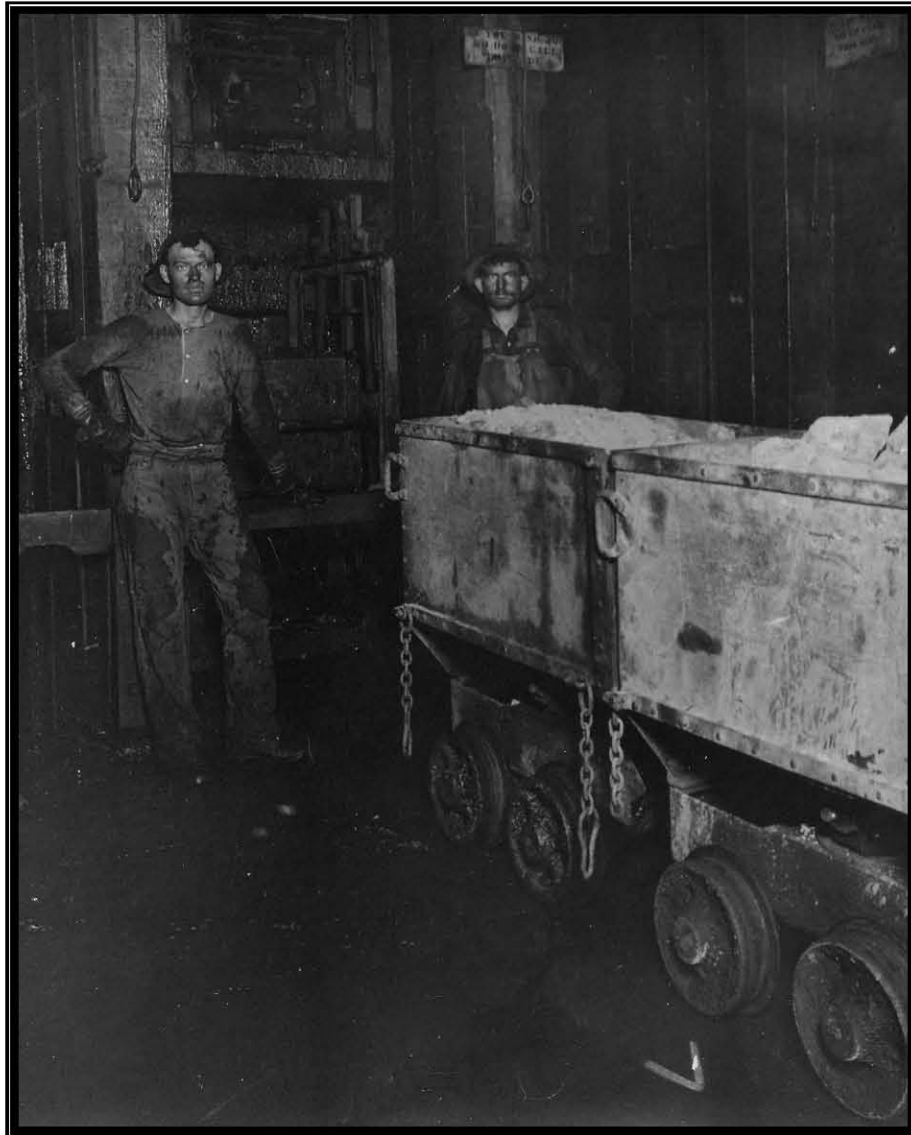


PICTORIAL GLOSSARY OF BISBEE MINING TERMS

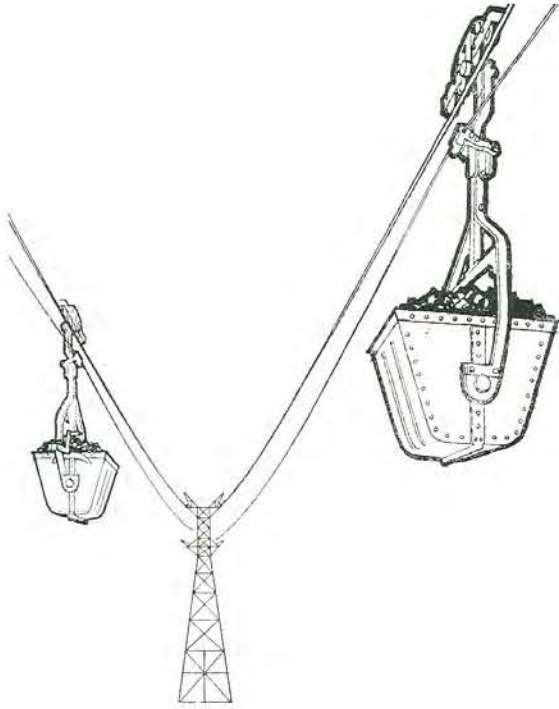


BY

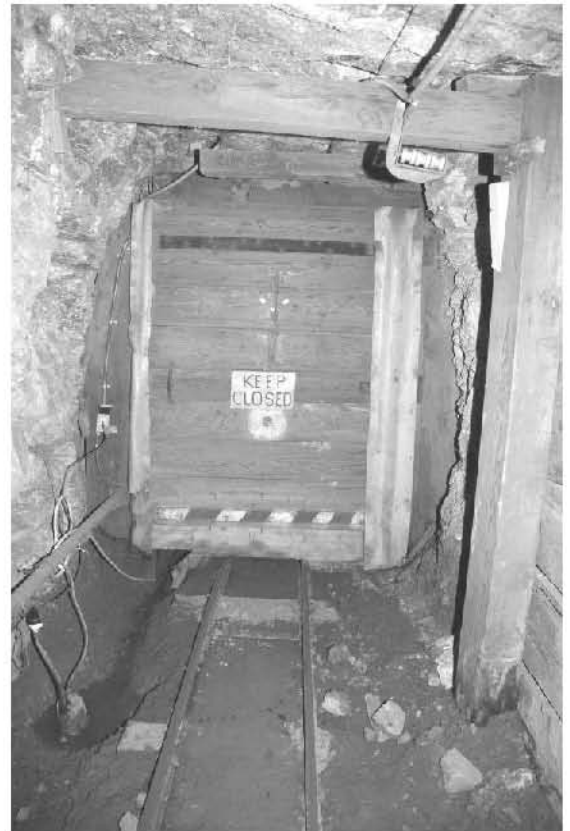
RICHARD W. GRAEME IV

THE INTENT OF THIS DOCUMENT IS TO PROVIDE A CLEARER UNDERSTANDING OF MANY OF THE MINING TERMS AND HELP IDENTIFY MINING EQUIPMENT USED IN BISBEE, ARIZONA. THE GREATEST CARE WAS TAKEN TO USE AS MANY AUTHENTIC EXAMPLES AS POSSIBLE. IF THE TERM IS FOLLOWED BY AN ASTERISK, THIS INDICATES THE IMAGE USED IS NOT OF AN ITEM THAT WAS SPECIFICALLY USED IN BISBEE. THE OBJECT AS CLOSE TO IDENTICAL TO EXAMPLES FROM BISBEE AS POSSIBLE, IF THEY ARE NOT IDENTICAL. THIS DOCUMENT IS DESIGNED TO BE USED IN CONJUNCTION WITH A GLOSSARY OF THE MINING AND MINING RELATED TERMS AS USED AT BISBEE, ARIZONA, WRITTEN BY RICHARD W. GRAEME III, DOUGLAS GRAEME AND MYSELF RICHARD W. GRAEME IV.

DECEMBER, 31 2010



AERIAL TRAMWAY *



AIR DOOR



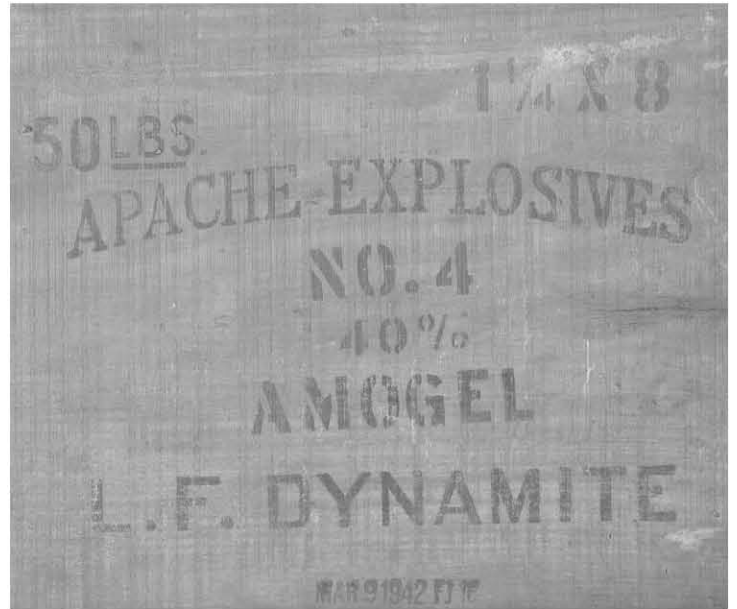
AIR HOSE



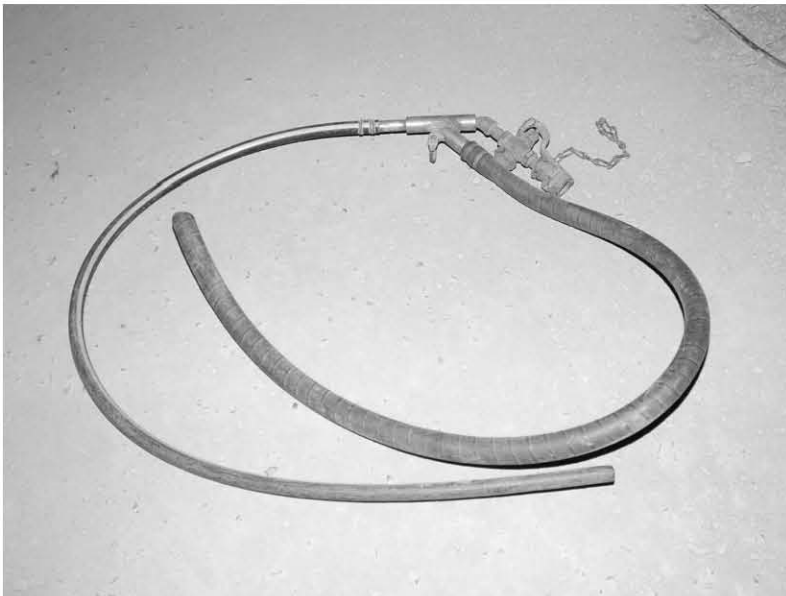
AIR LINE



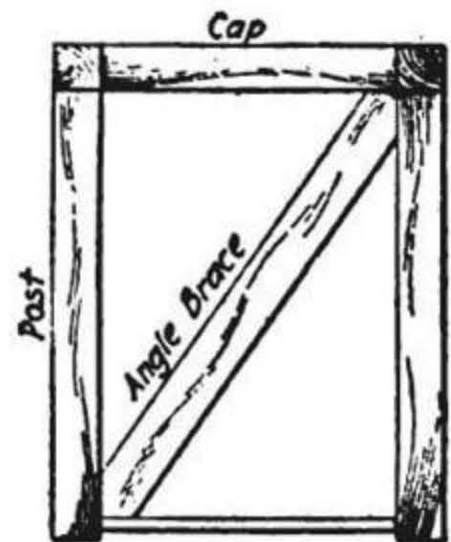
AIR RECEIVER



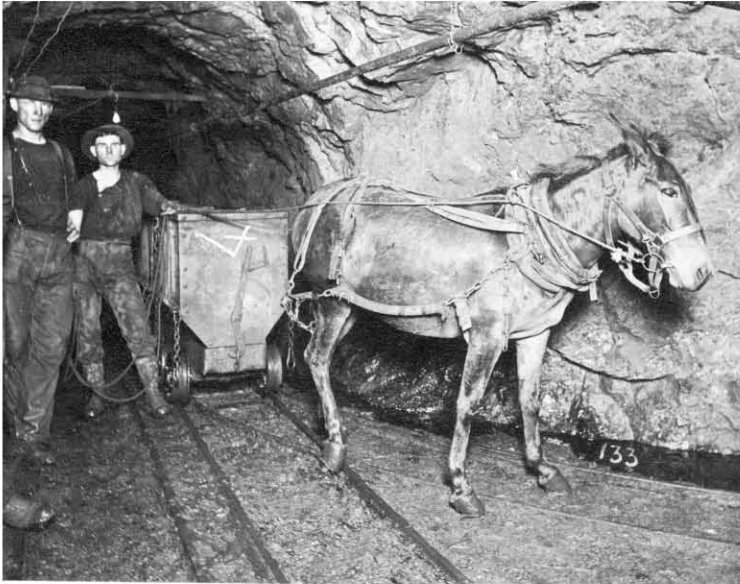
AMOGEL



ANFO LOADER



ANGLE BRACE



ANIMAL HAULAGE



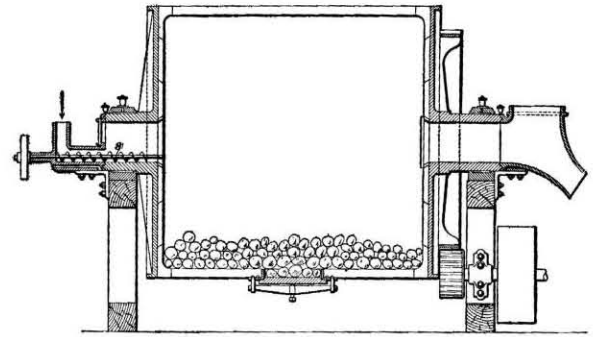
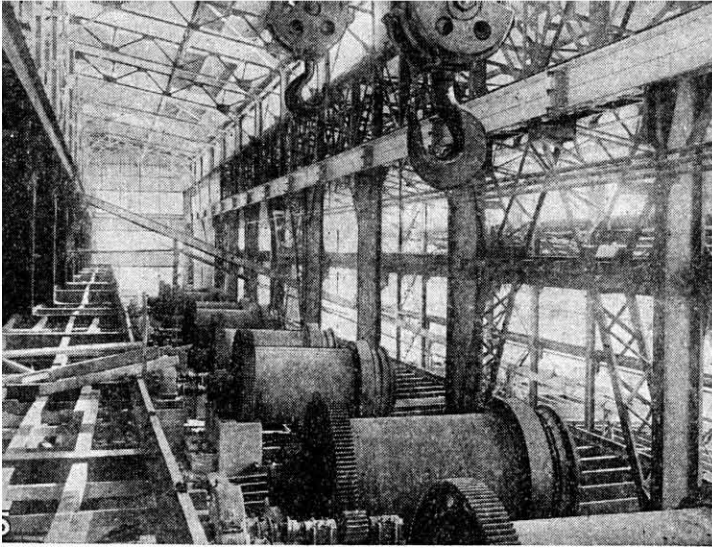
AUGER



B.O./ BAD ORDER



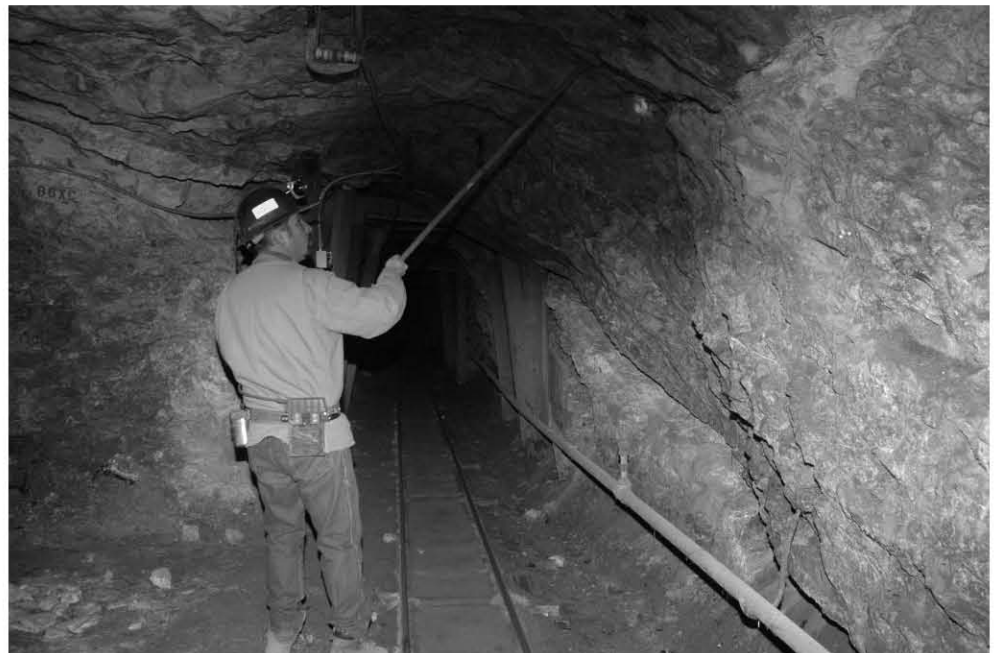
BAIL



BALL MILL



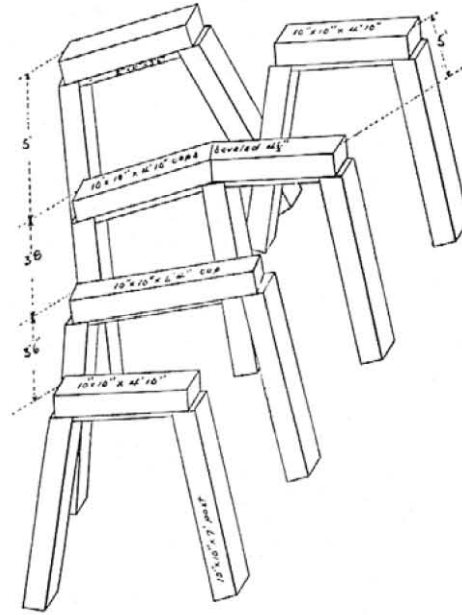
BAR



BARRING DOWN



BASKET



BAT WING SET

ARIZONA STATE CODE OF MINE BELL SIGNALS			
— SIGNALS —			
1	BELL	STOP IMMEDIATELY IF IN MOTION.	
2	BELLS	HOIST MUCK.	
3-1	BELLS	LOWER.	
3-2	"	HOIST MEN, IF BELLS RUNG SLOWLY.	
4	"	LOWER MEN, MOVE SLOWLY.	
5	"	RELEASE CAGE, SKIP OR BUCKET.	
6	"	BLASTING OR READY TO SHOOT.	
THIS IS A CAUTION SIGNAL AND IF THE ENGINEER IS PREPARED TO ACCEPT IT HE MUST ACKNOWLEDGE BY RAISING BUCKET OR CAGE A FEW FEET THEN LOWERING IT AGAIN. AFTER ACCEPTING THIS SIGNAL ENGINEER MUST BE PREPARED TO HOIST MEN AWAY FROM BLAST AS SOON AS SIGNAL 1 BELL IS GIVEN AND MUST ACCEPT NO OTHER SIGNAL IN THE MEANTIME.			
7	BELLS	AIR ON OR OFF.	
8	"	DANGER SIGNAL, FOLLOWED BY STATION SIGNAL CALLS CAGE TO THAT STATION.	
THIS SIGNAL TAKES PRECEDENCE OVER ALL OTHERS EXCEPT AN ACCEPTED BLASTING SIGNAL.			
— STATION SIGNALS —			
1-2	BELLS	COLLAR OF SHAFT.	
1-3	BELLS	1 LEVEL	
1-4	"	2 "	
1-5	"	3 "	
2-1	"	4 "	
2-2	"	5 "	
2-3	"	6 "	
2-4	"	7 "	
2-5	"	8 "	
4-1	"	9 "	
4-2	"	10 "	
4-3	"	11 "	
4-4	"	12 "	
4-5	"	13 "	
5-1	"	14 "	
5-2	BELLS	15 LEVEL	
5-3	"	16 "	
5-4	"	17 "	
5-5	"	18 "	
6-1	"	19 "	
2-1-2	"	20 "	
2-1-3	"	21 "	
2-1-4	"	22 "	
2-1-5	"	23 "	
2-2-1	"	24 "	
2-2-2	"	25 "	
2-2-3	"	26 "	
2-2-4	"	27 "	
2-2-5	"	28 "	
STATION SIGNAL MUST BE GIVEN BEFORE HOISTING OR LOWERING SIGNAL. THE ENGINEER SHALL NOT MOVE A CAGE, SKIP OR BUCKET UNLESS HE UNDERSTANDS THE SIGNAL. ONE COPY OF THIS SIGNAL CODE SHALL BE POSTED ON THE GALLOW'S FRAME ONE AT EACH STATION AND ONE BEFORE THE ENGINEER.			
PETER SMOY CASE SUPER SMOY BRANCH CHICAGO, ILL. A.H. 795			

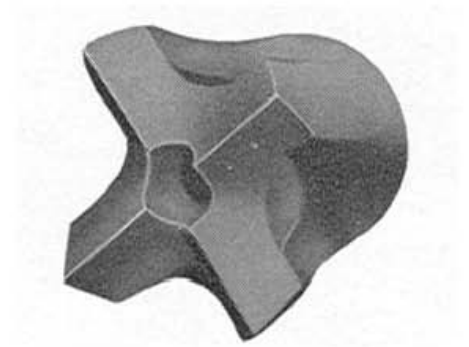
BELL CHART



BELL



BENCH (MULTIPLE)



BIT*



BIT BOX



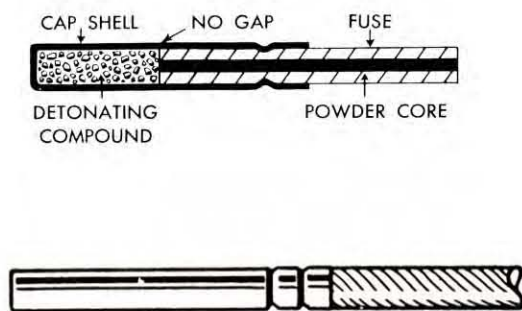
BIT HAMMER



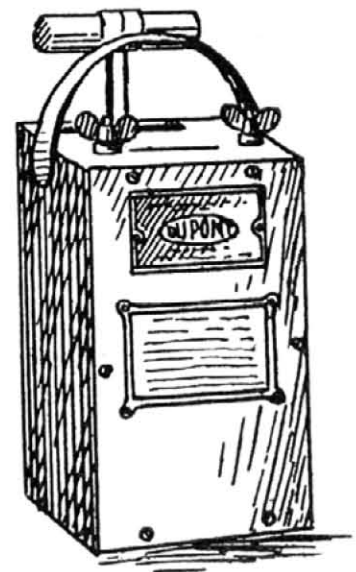
BIT KNOCKER



BLAST HOLE



BLASTING CAP



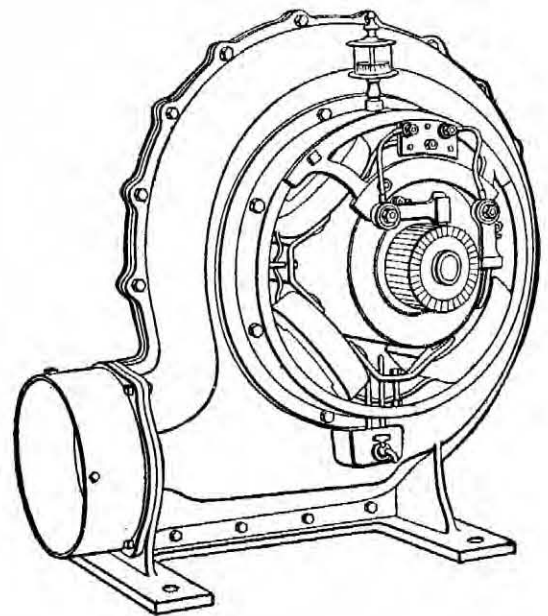
BLASTING MACHINE



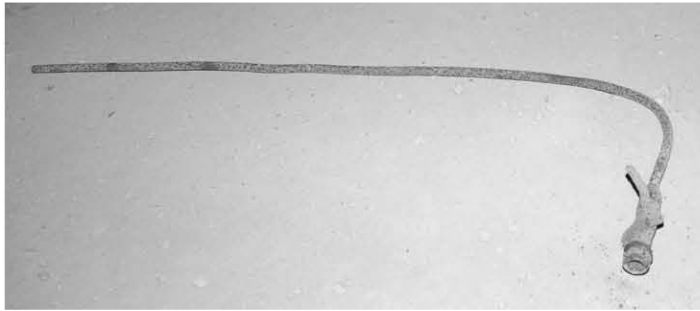
BLOCK (SLUSHER)



BLOCK LIGHT



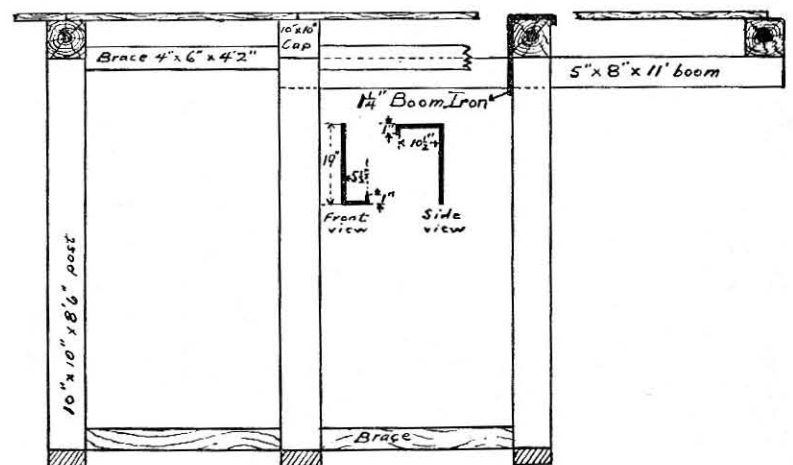
BLOWER



BLOW PIPE



BONNET



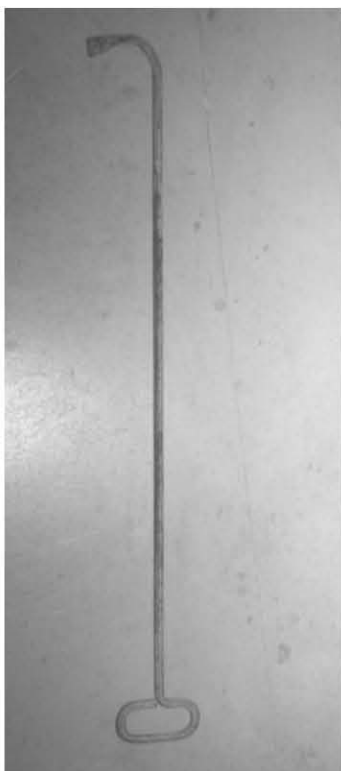
BOOM



BOOM HANGER



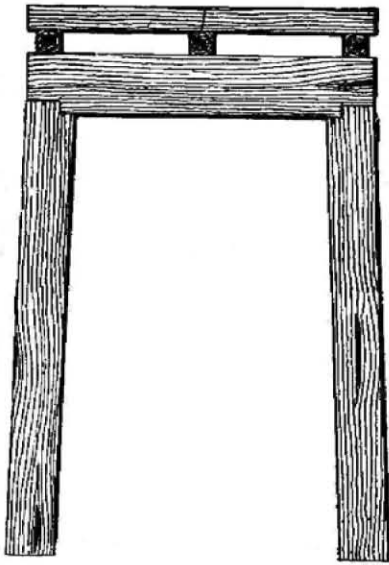
BOOT LEG



BOULDER HOOK



BOSS'S BIKE



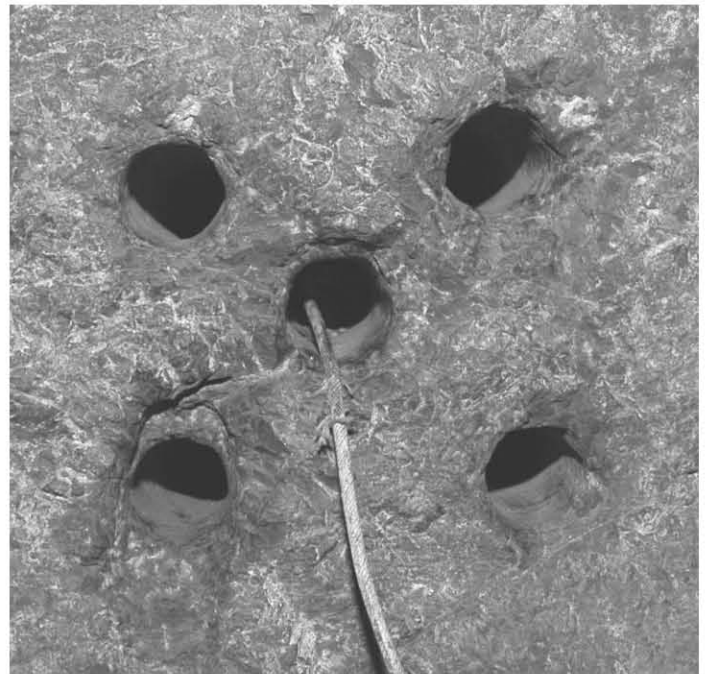
BRIDGE



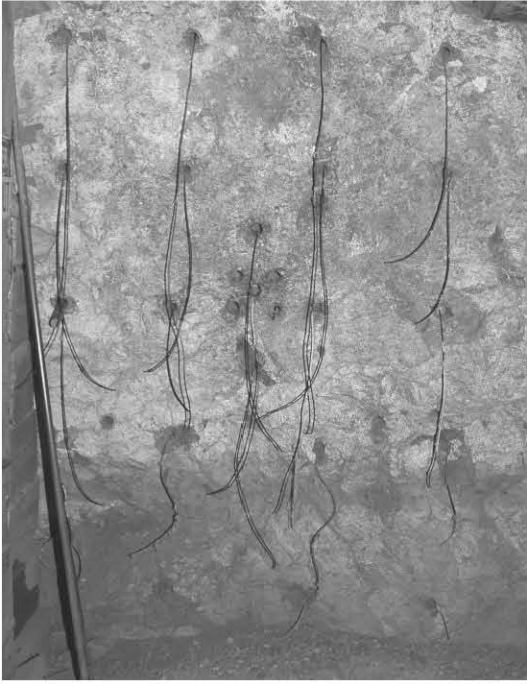
BUCKET (SHOVEL)



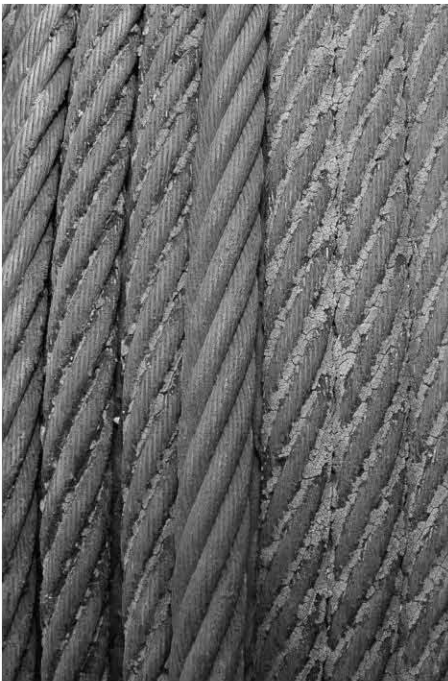
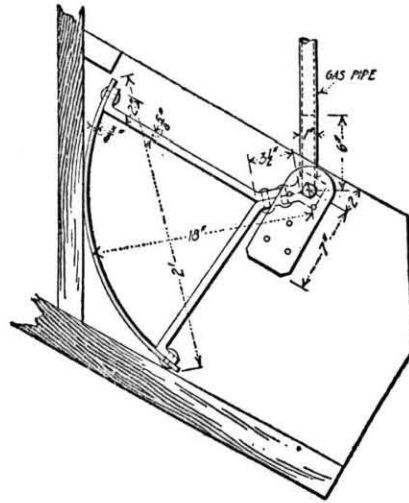
BULKHEAD



BURN



BURN CUT



CABLE



CABLE SOCKET*



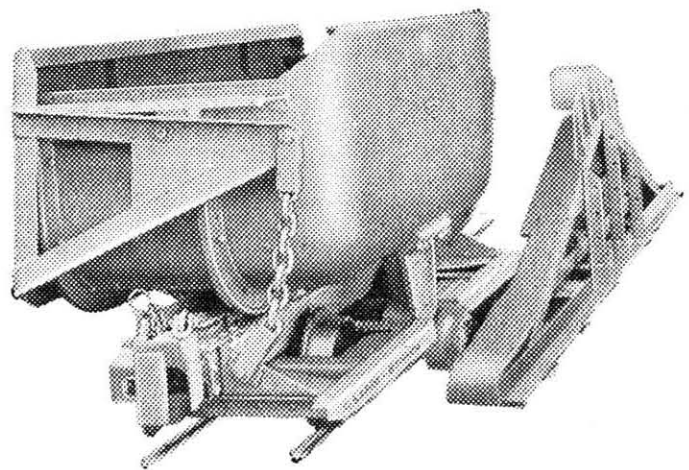
CAGE (S)



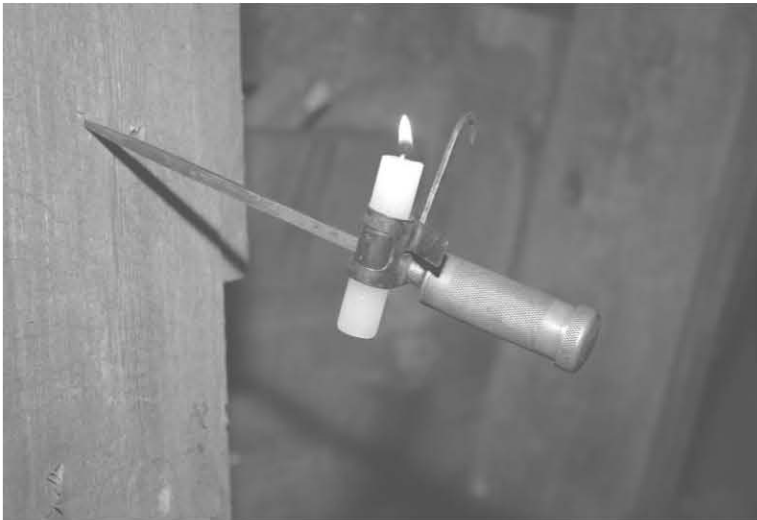
CAGE BAR AND CAGE GATES



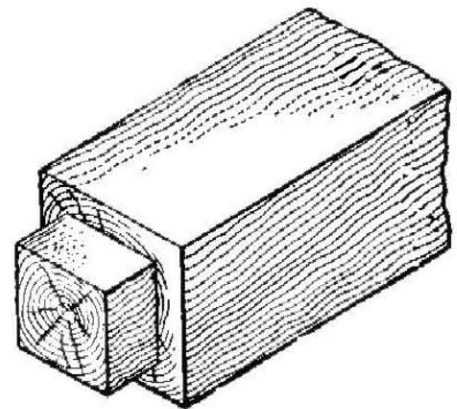
CALL BELL



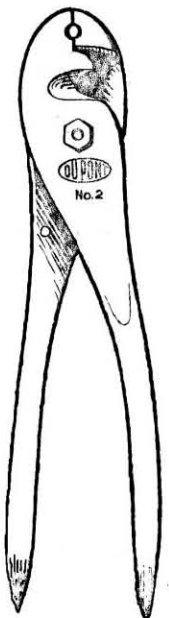
CAMELBACK*



CANDLESTICK



CAP



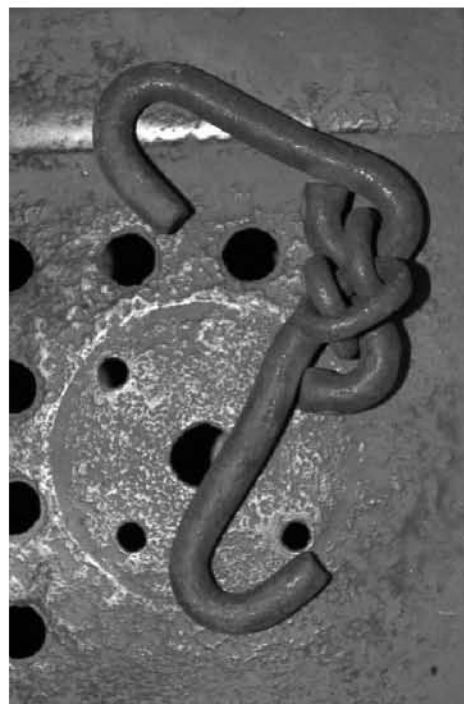
CAP CRIMPER



CAP LAMP



**CAR (S)
(STYLE "H")**



CAR CHAIN



CARBAMITE *



CARBIDE BIT*



CARBIDE LAMP



CAT



CATCH UP GROUND



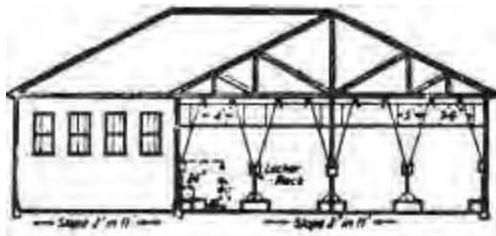
CAVE



CAVE IN



CAVING GROUND



CHANGE HOUSE



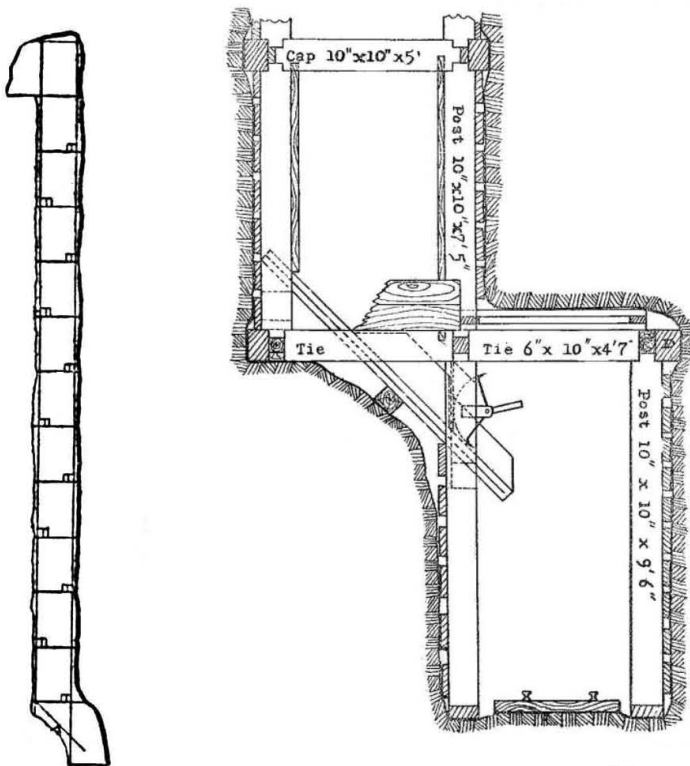
CHINK



CHUCK



CHURN DRILL



CHUTE





CHUTE BAR



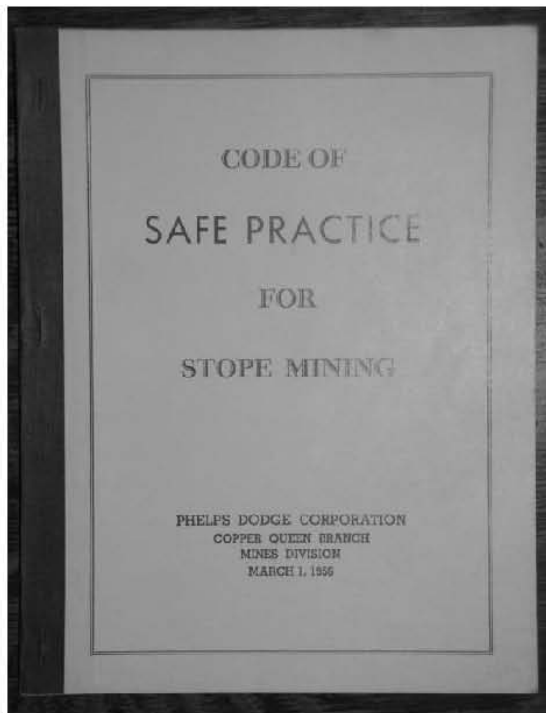
**CHUTE DOOR
(COPPER QUEEN STYLE, LOOSE)**



**CHUTE DOOR HANDLE
(VERDE STYLE)**



CHUTE STAND



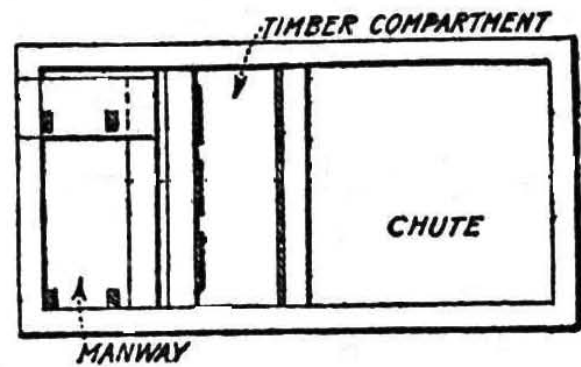
CODE OF SAFE PRACTICE



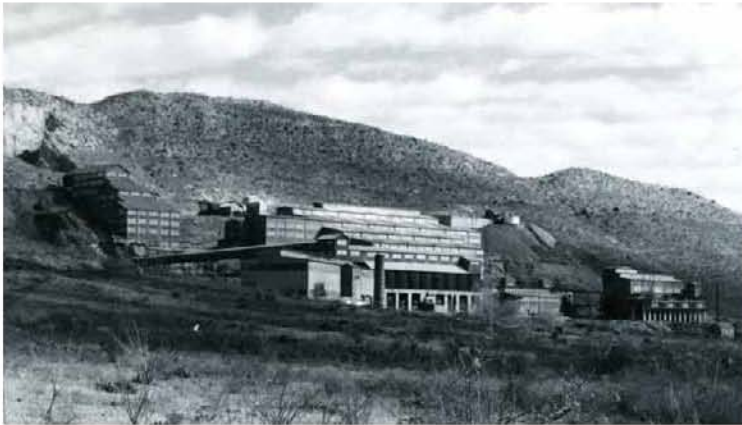
COLLAR BRACE



COLUMN



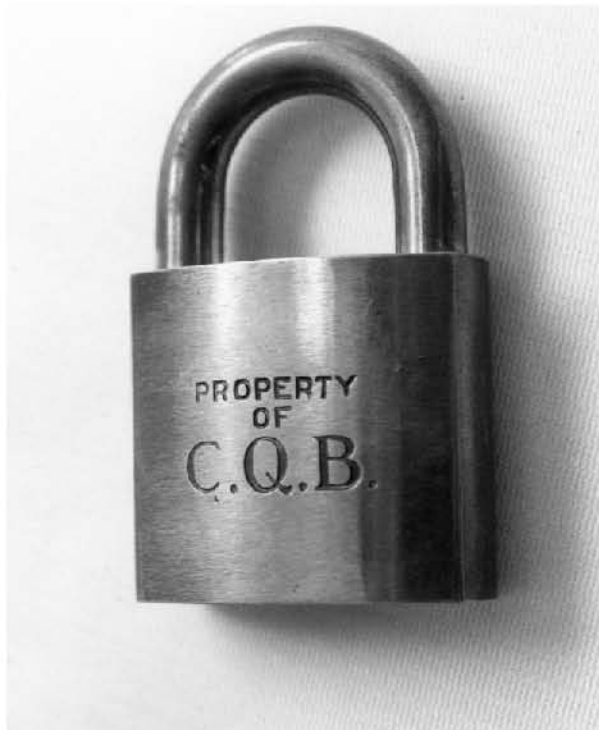
**COMPARTMENT (S)
(RAISE)**



CONCENTRATOR



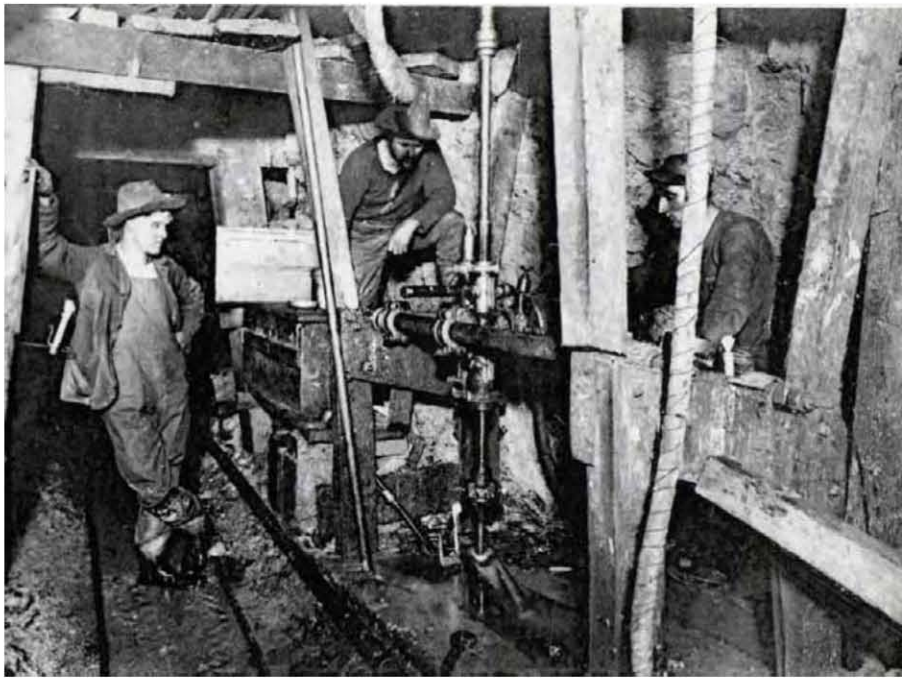
CRIBBED RAISE



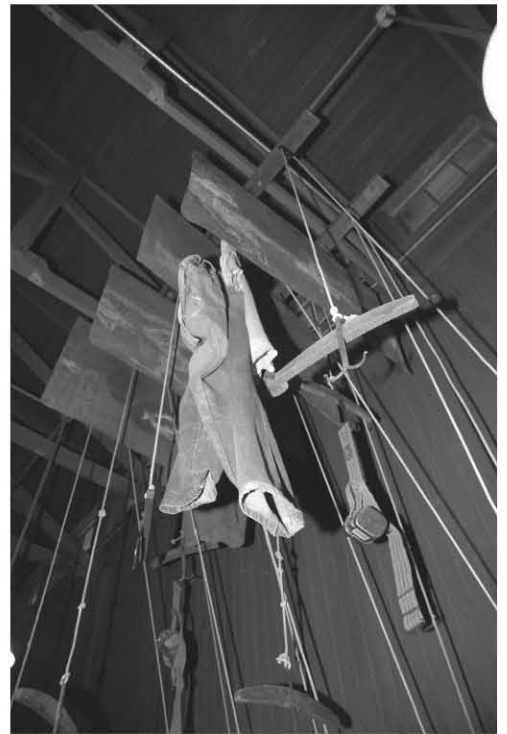
**COPPER QUEEN BRANCH
(C.Q.B.)**



DAYLIGHTED



DIAMOND DRILL



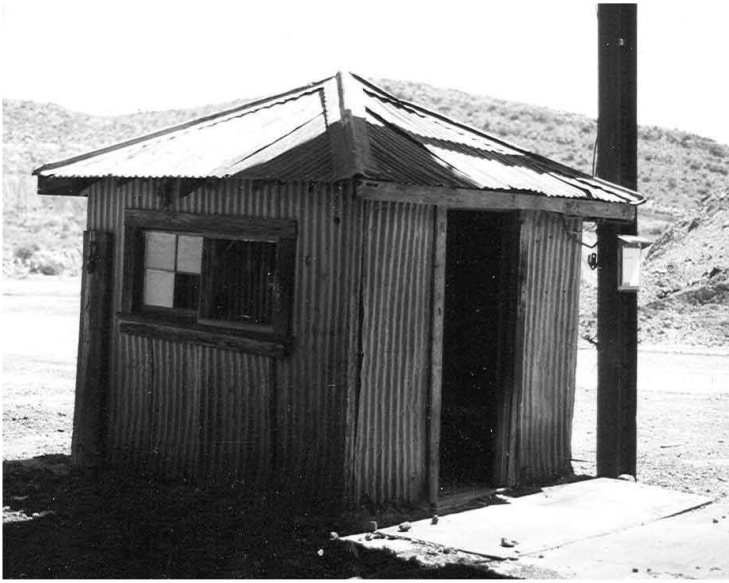
DIGGERS



DINKEY HOIST



**DIVISION
(#1)**



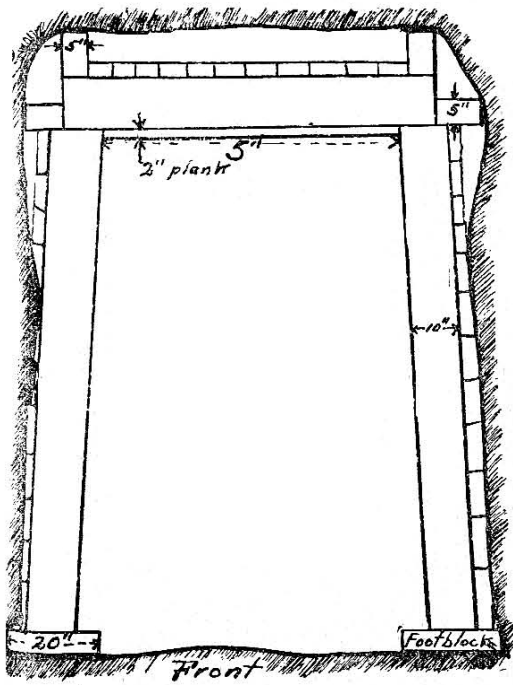
DOGHOUSE



DOGS



DOUBLE JACK



DRIFT SET



DRIFTER

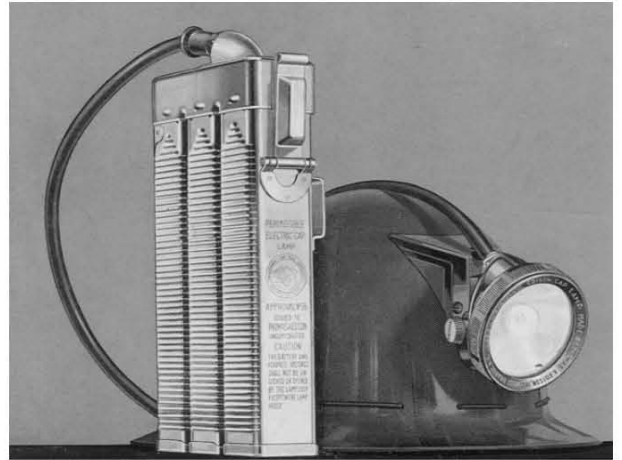


DUMMY HOLE



DUMP

DUMP



EDISON LAMP*



ENCLOSED HEADFRAME



END DUMP



ESCAPEWAY



EYEBOLT



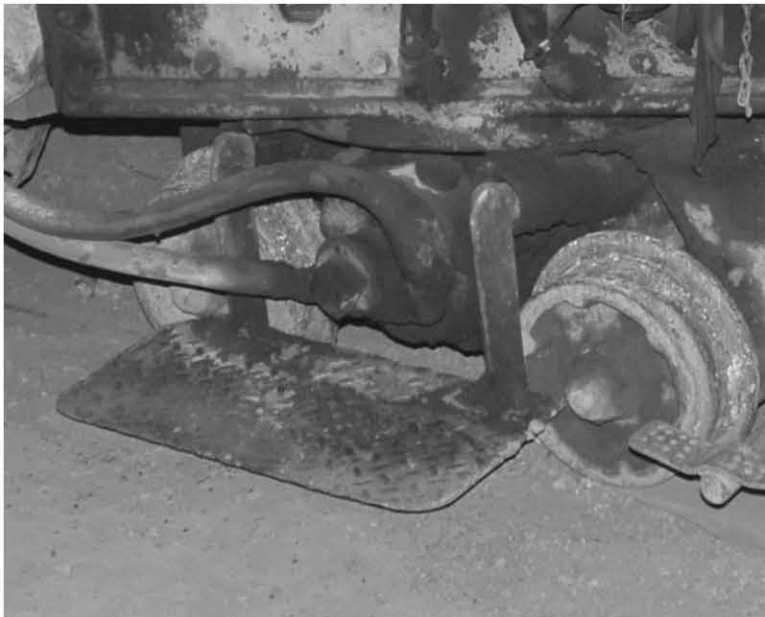
EYE SHIELD



FACE



FALL OF GROUND



FINALY STEP



FIRE DOOR



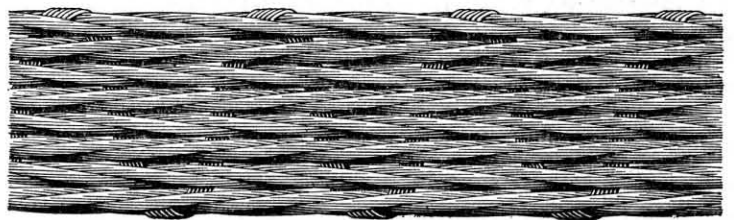
FIRE FUSE*



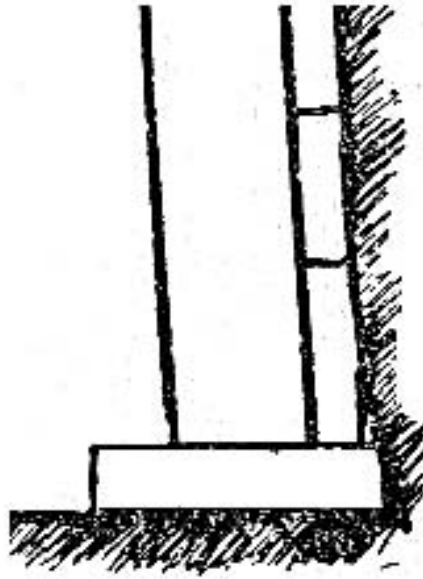
FISH PLATE



FLANGE



FLAT ROPE



FOOTBOARD



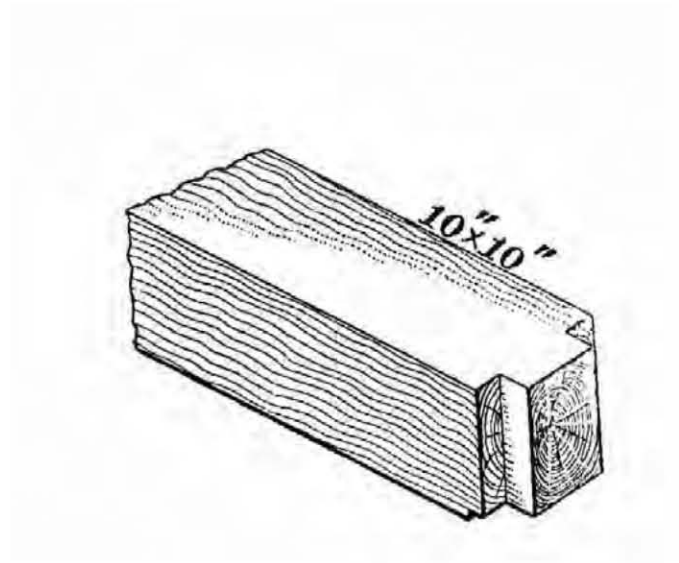
FROG



FUSE CAN



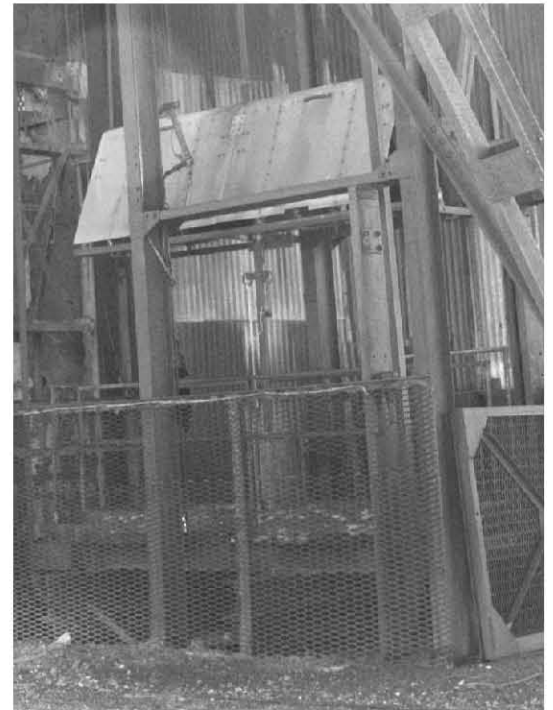
GIN POLE



GIRT



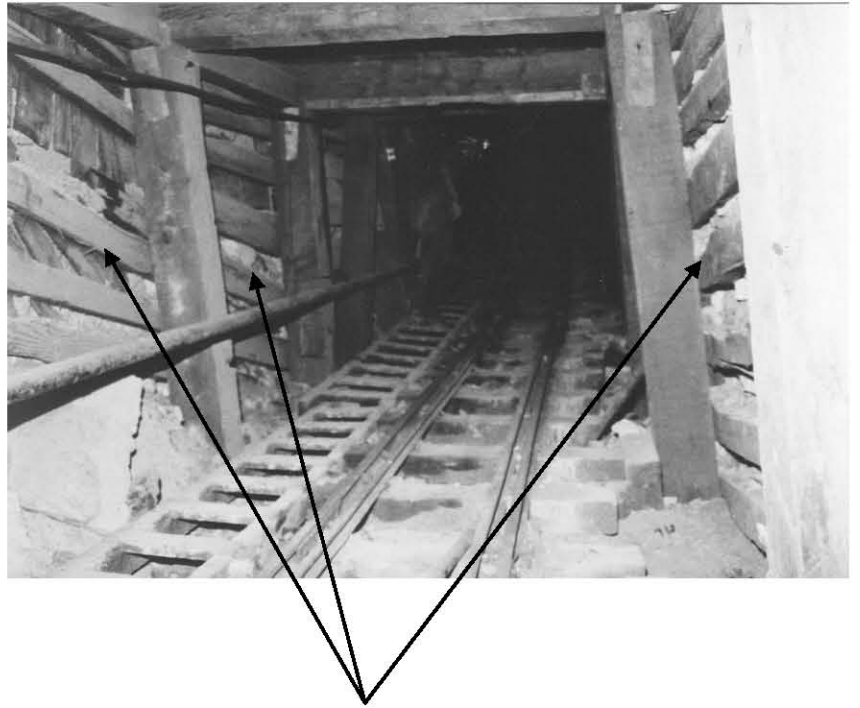
GLORY HOLE



GO DEVIL



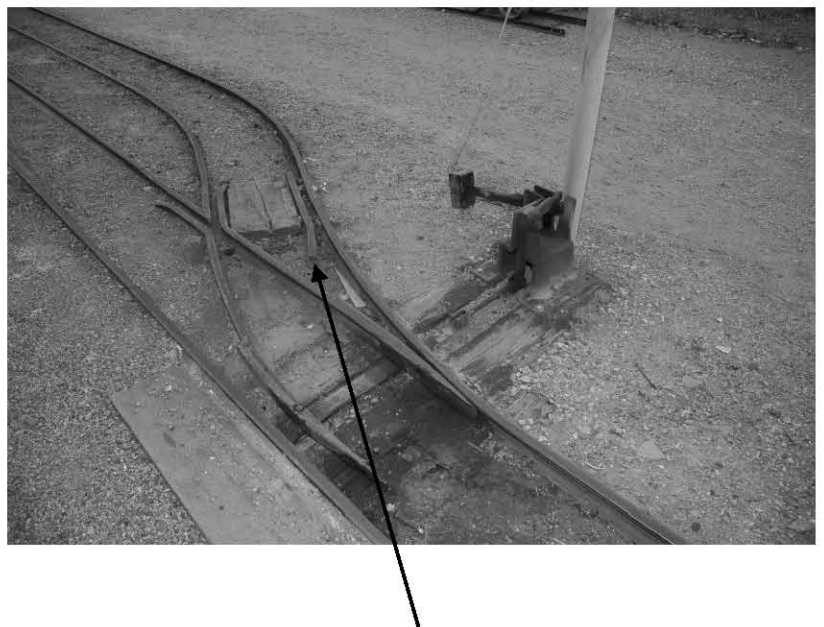
GOB WALL



GOB FENCE (S)



GRIZZLEY



GUARD RAIL



**GUIDES
(ONE HIDDEN)**



HAND STEEL



HARD BOILED



HAUL ROAD



HEADFRAME



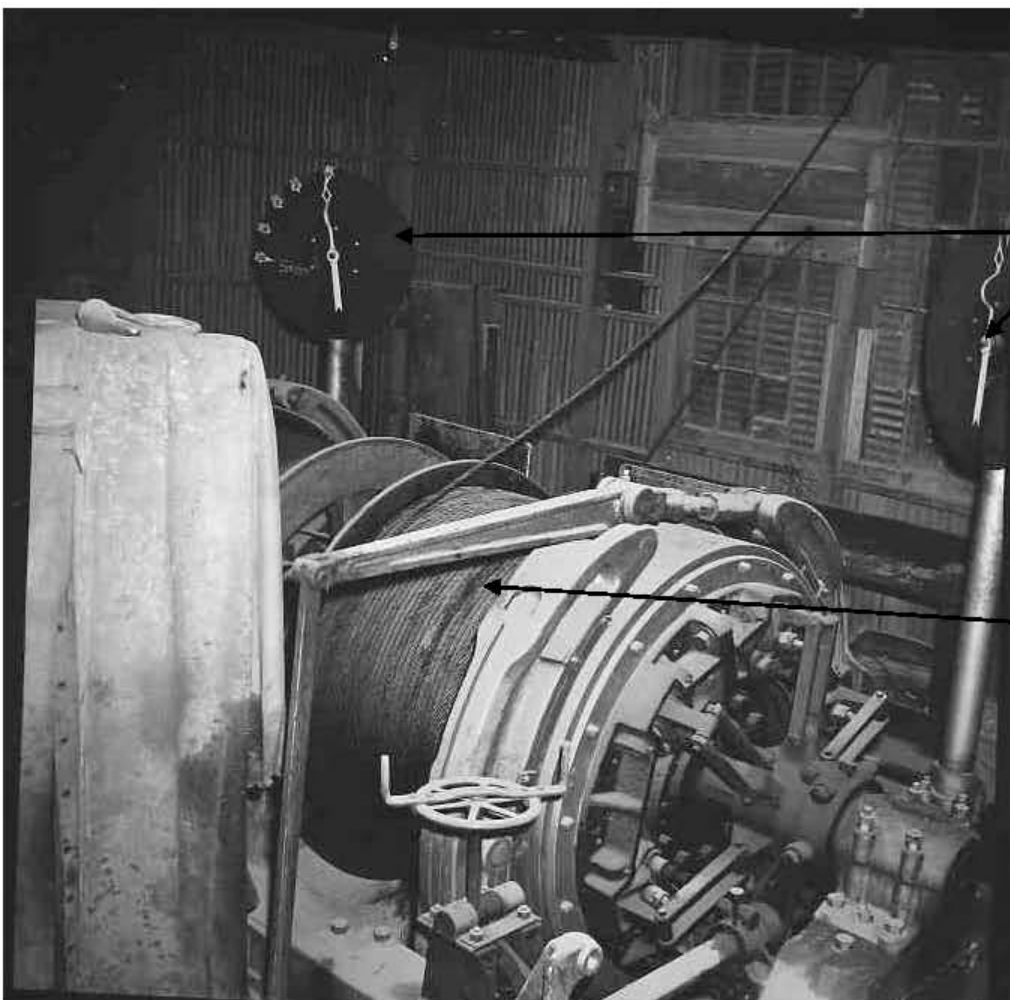
HEAVY GROUND



HELMET CREW



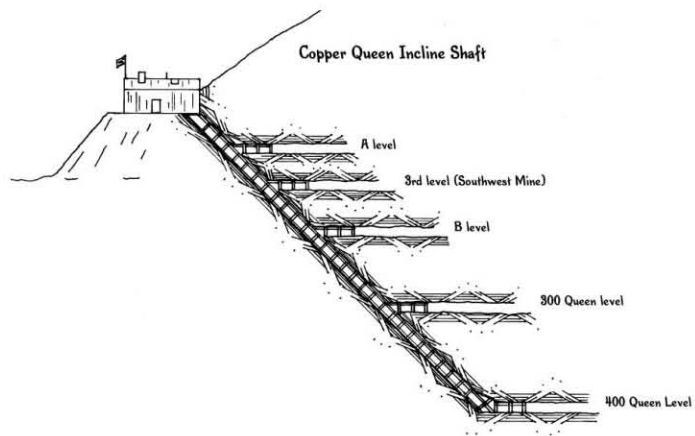
HITCH



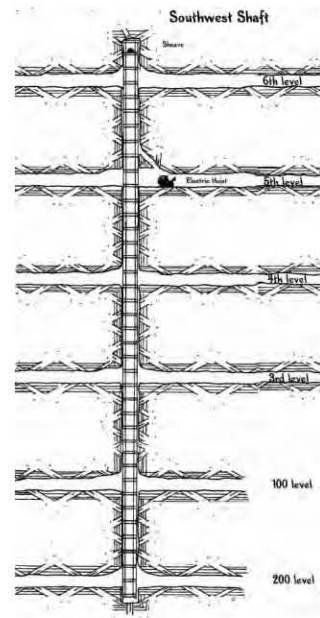
HOIST DRUM
INDICATOR(S)

HOIST DRUM

HOIST



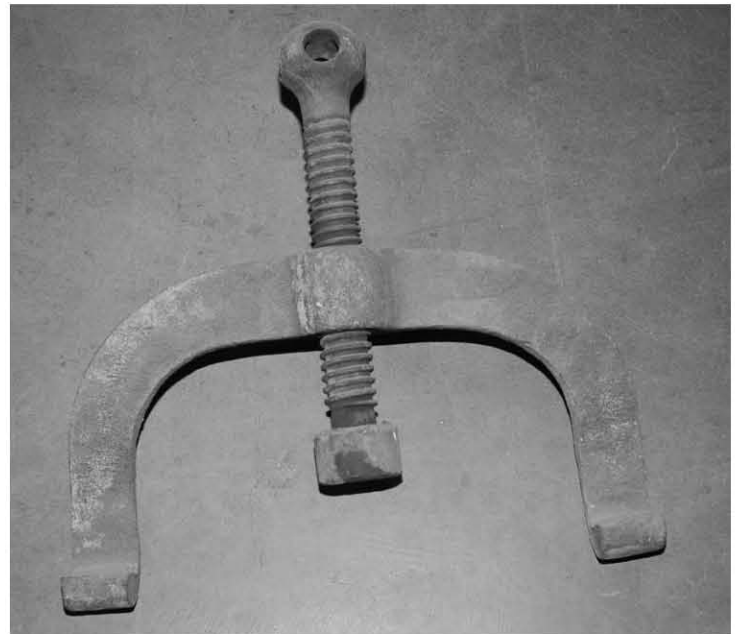
INCLINED SHAFT



INTERIOR SHAFT



JACK LEG



JIM CROW



KICKED OUT



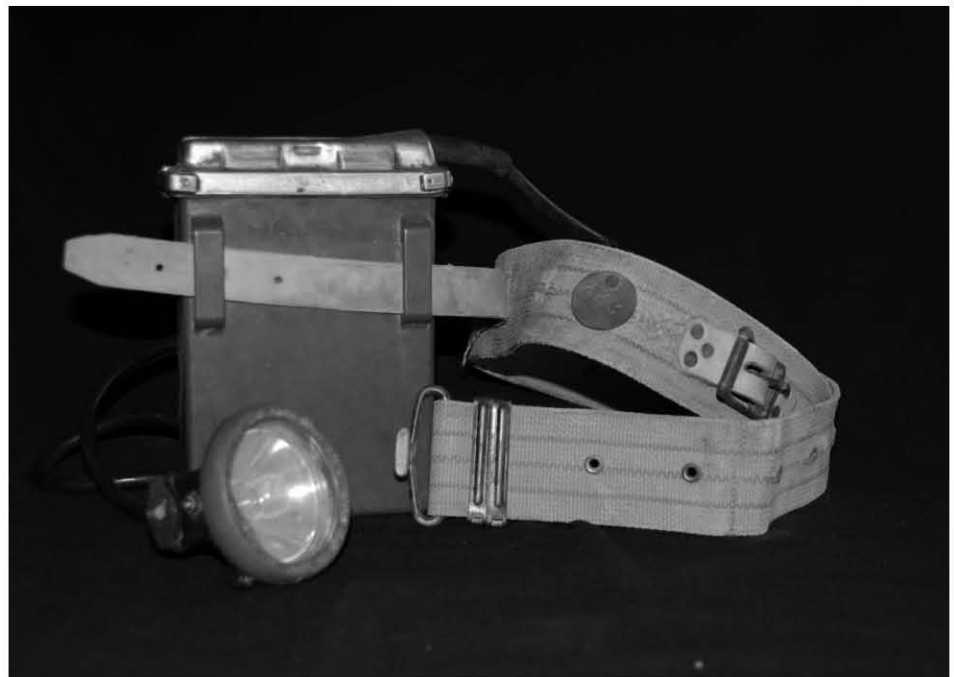
LADDER HANGER



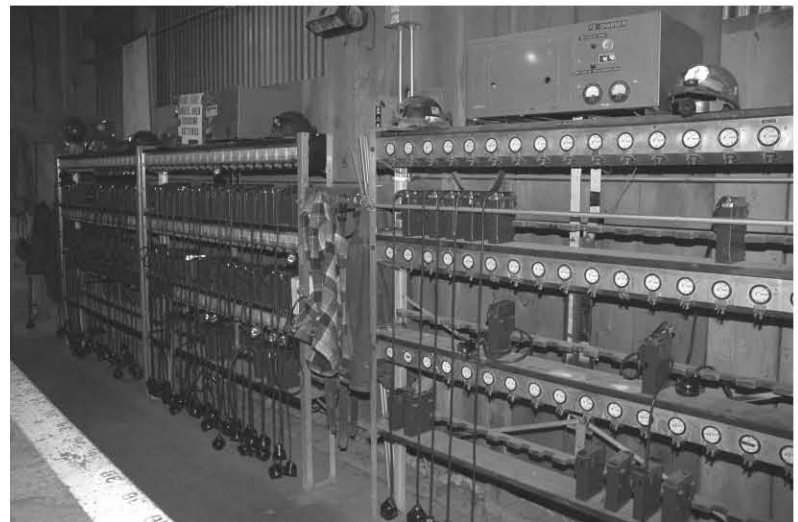
LAGGED OFF



LAGGING



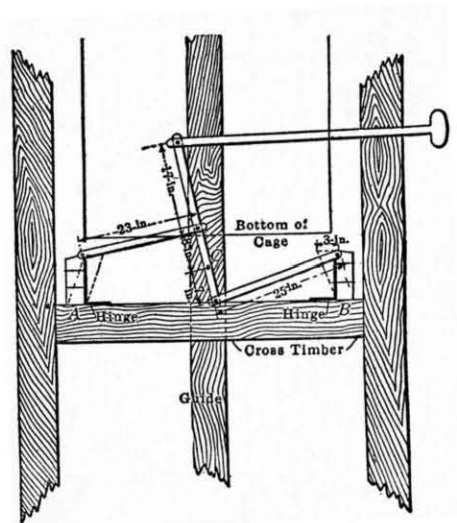
LAMP BELT



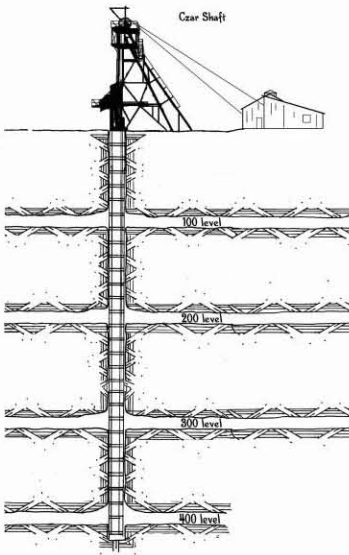
LAMP RACK



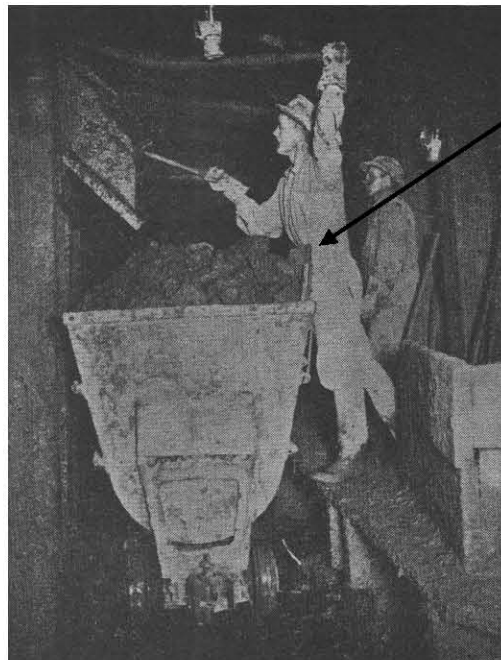
**LANDING
(MANWAY)**



LANDING CHAIR



LEVEL (S)



**LOADING
BOARD**

LOADING BOARD



LOADING STICK



MAN CAR



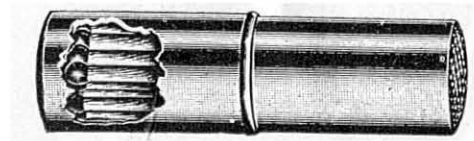
MAN TAG(S)



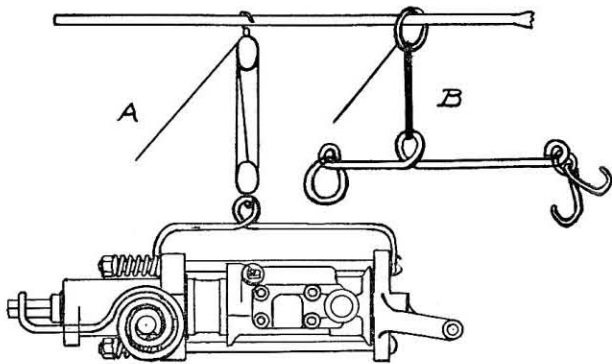
MANCHA MOTOR



MANWAY



MATCH SAFE*



MEXICAN SETUP



MINE PHONE



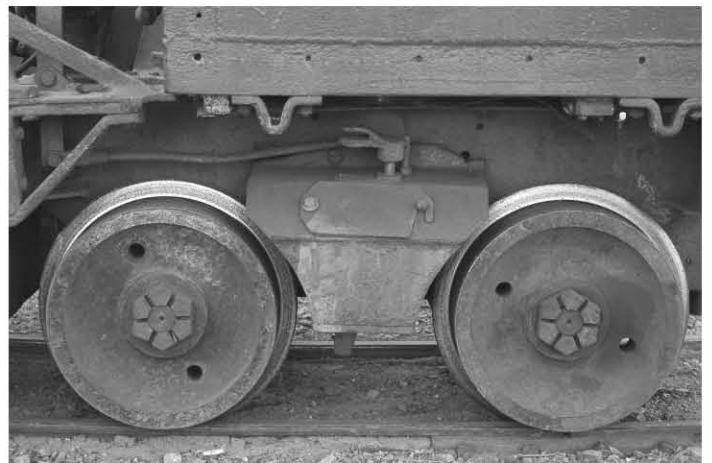
MISSED HOLE



MOTOR



MOTOR BELL



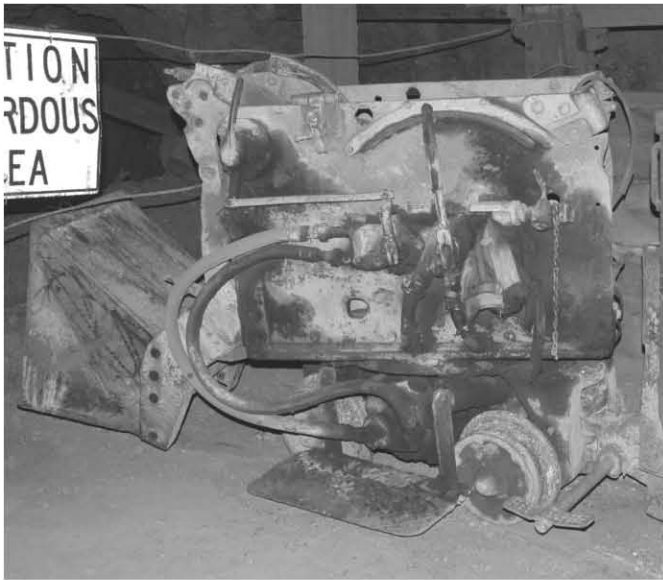
MOTOR SANDERS



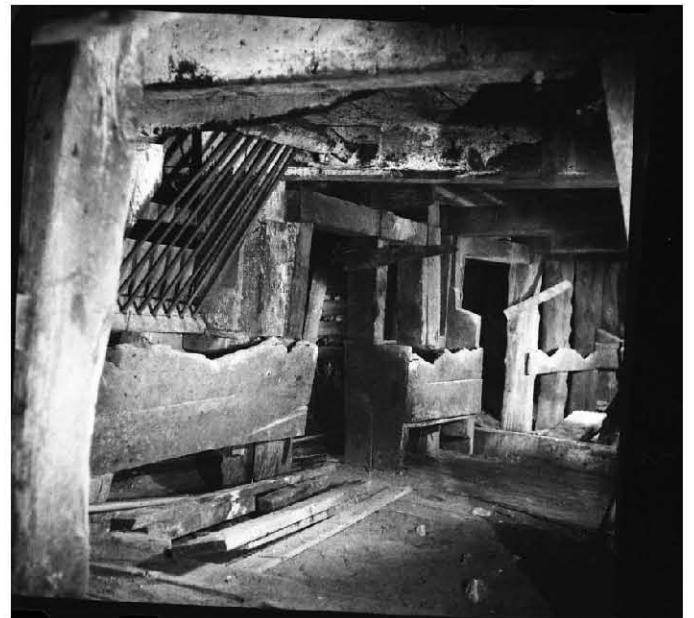
MOTOR STEP



MUCK TRUCK



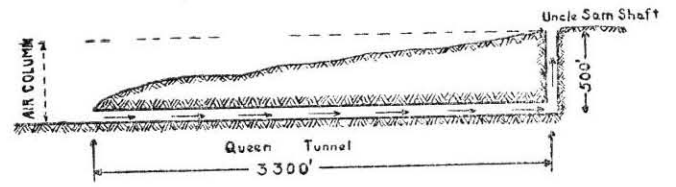
MUCKING MACHINE



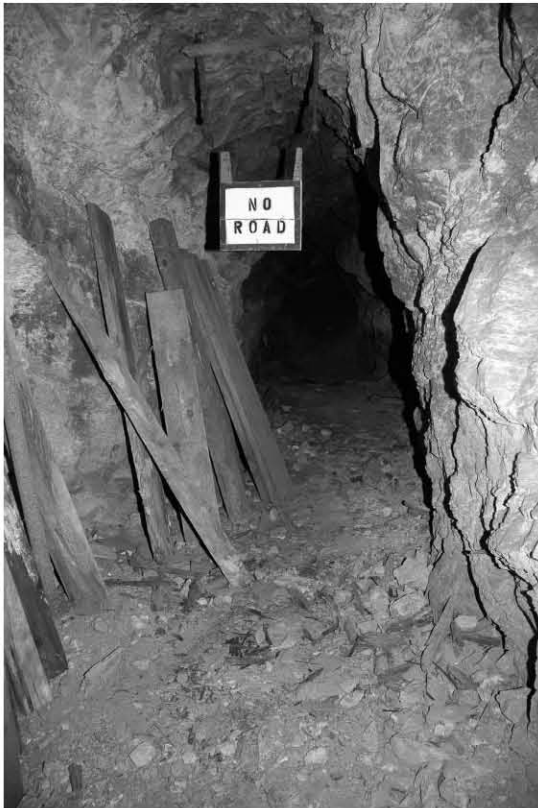
MULE BARN



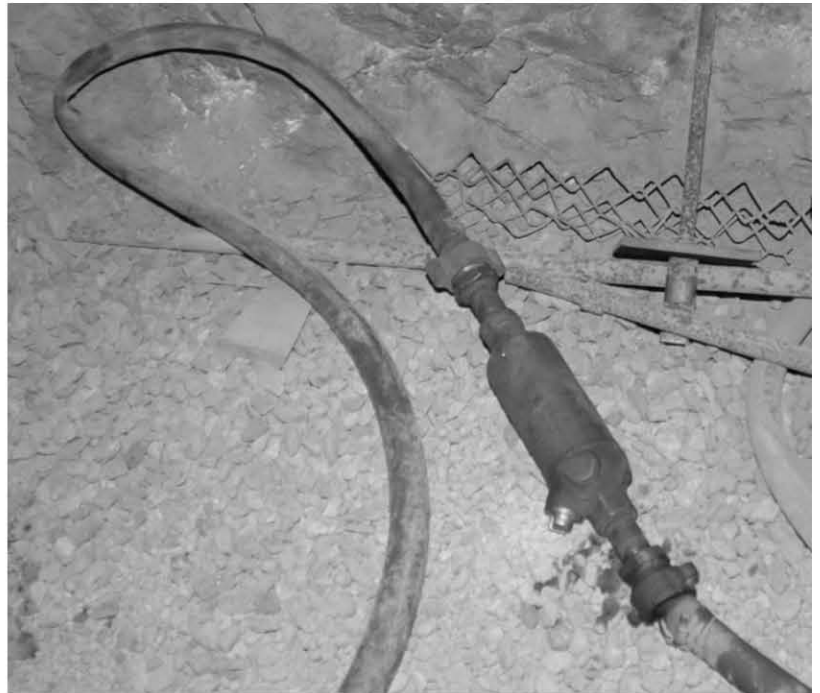
NAIL BAG(S)



NATURAL VENTILATION



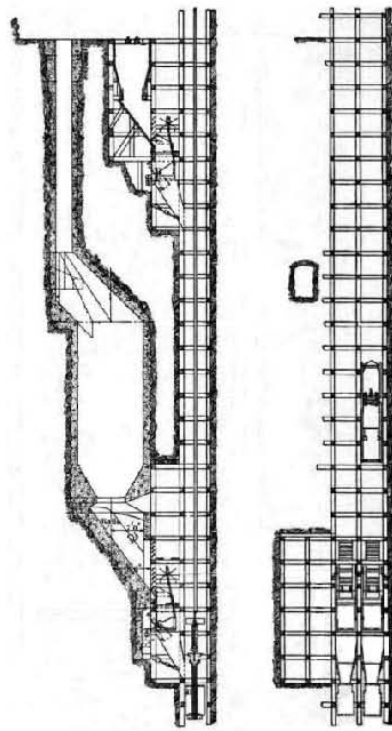
NO ROAD



OIL BOTTLE



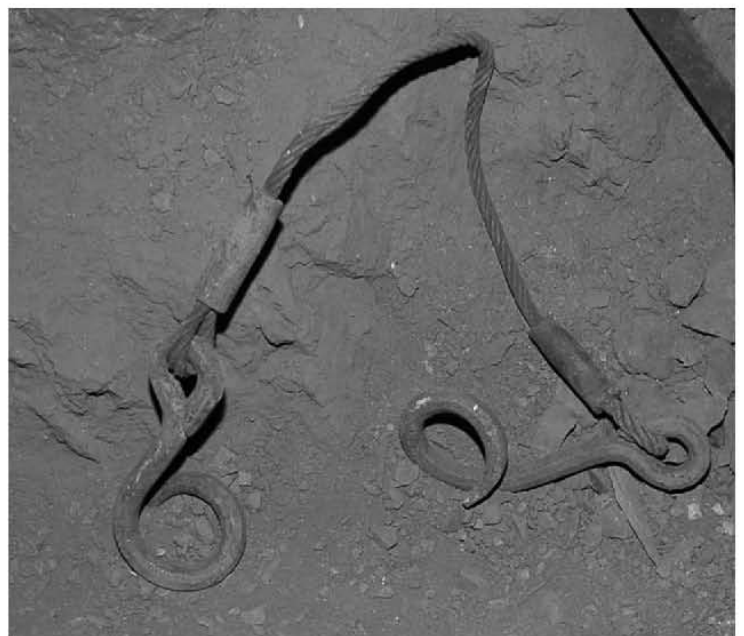
ORE BIN



ORE PASS



PIE CAN



PIG TAIL (S)



PILLAR



PIPE AND TRACK CAR



PLUGGER



PORTAL



POST



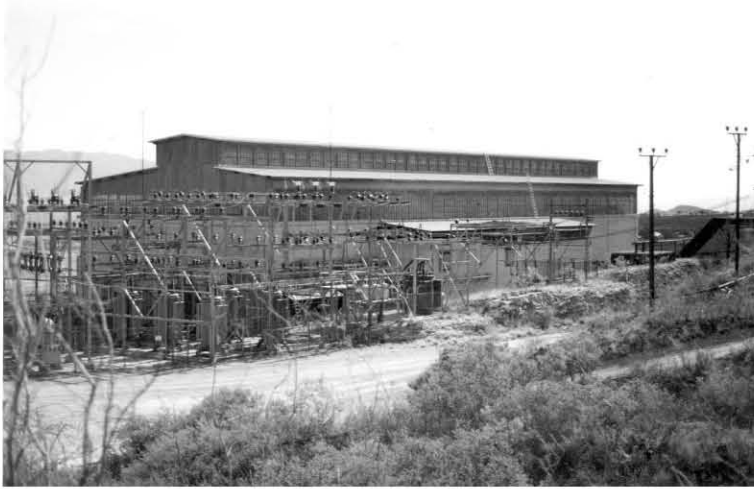
POWDER BOX (ES)



POWDER CAR



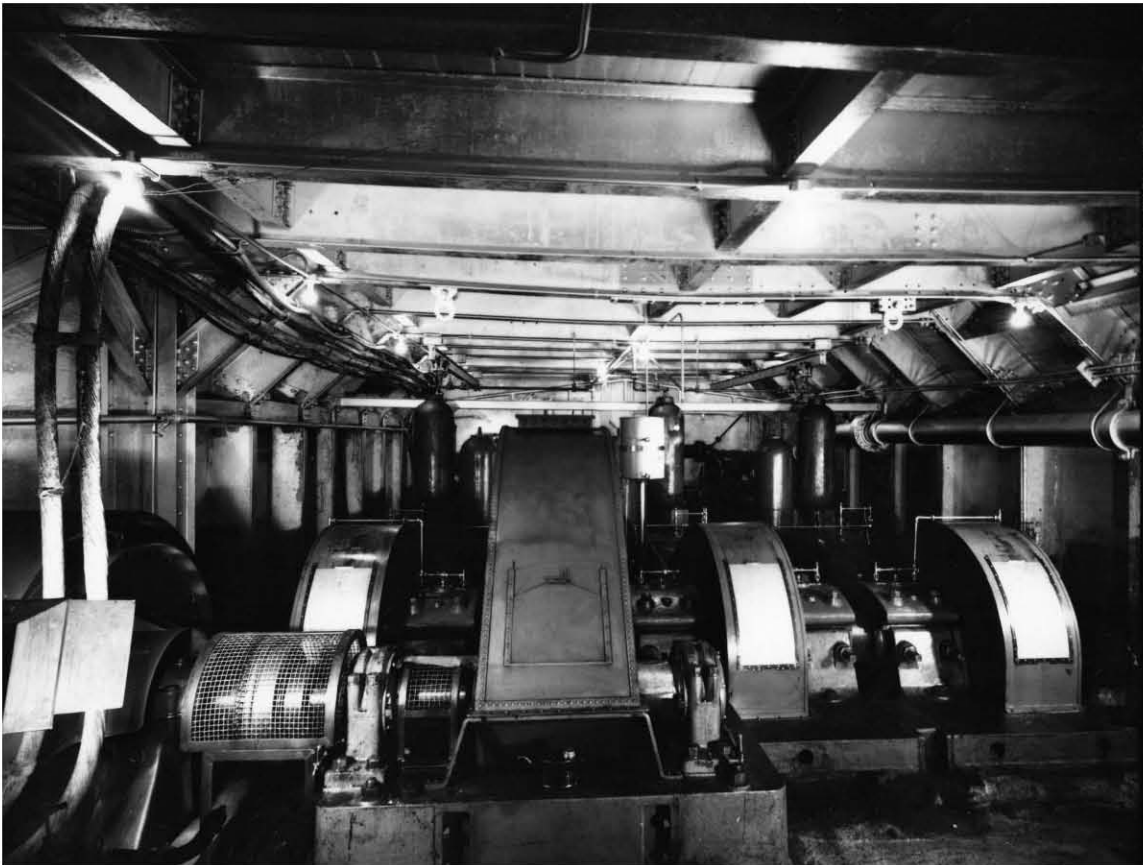
**POWDER MAGAZINE
(ABANDONED)**



POWER PLANT



PRECIPITATION PLANT



PUMP STATION



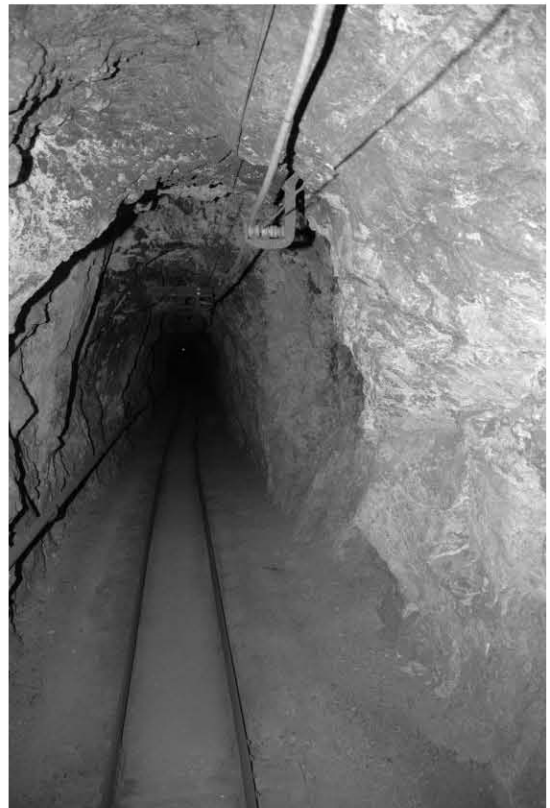
PUP MOTOR



RADIO BELL(S)



RAIL PUNCH



RAW CROSSCUT



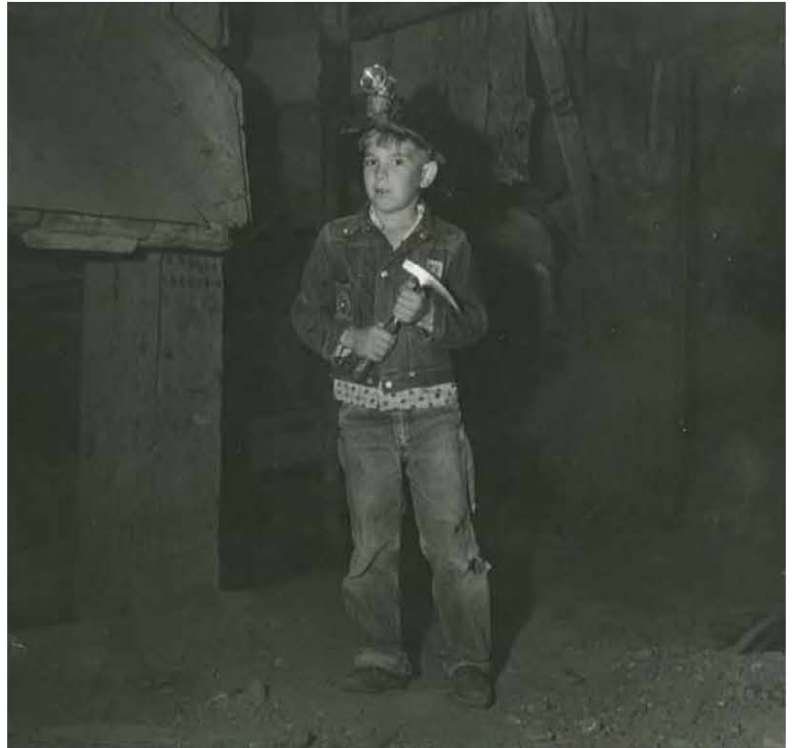
ROCKER DUMP



SADDLE



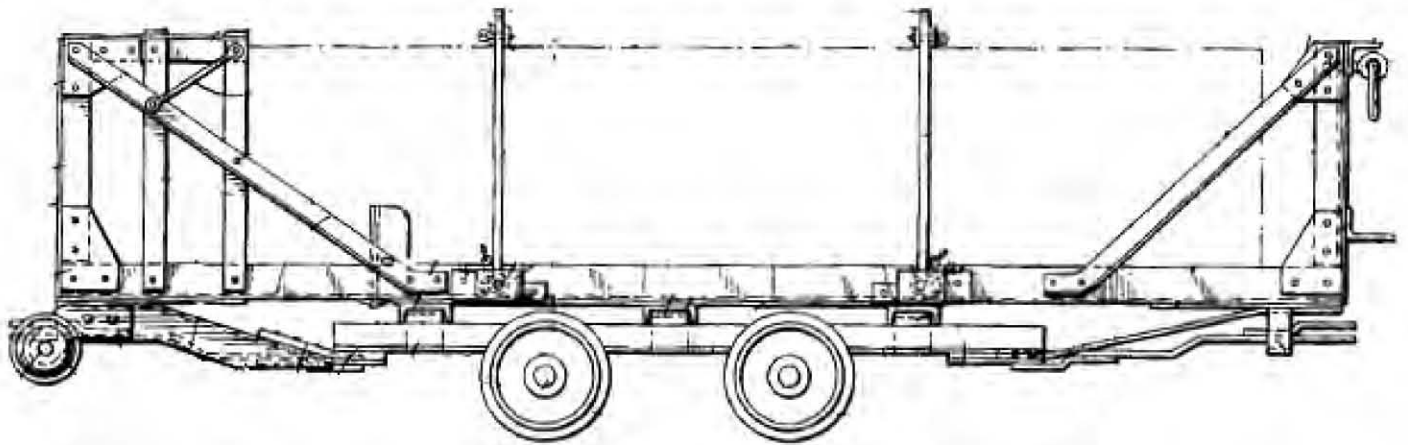
SAFETY CHAIN



SAMPLE HAMMER



SCONCE



SCOTT TRUCK



SECTIONAL SET (S)



SELF RESCUER



SHAFT BELL

SHAFT BELL



SHAFT GATE (s)



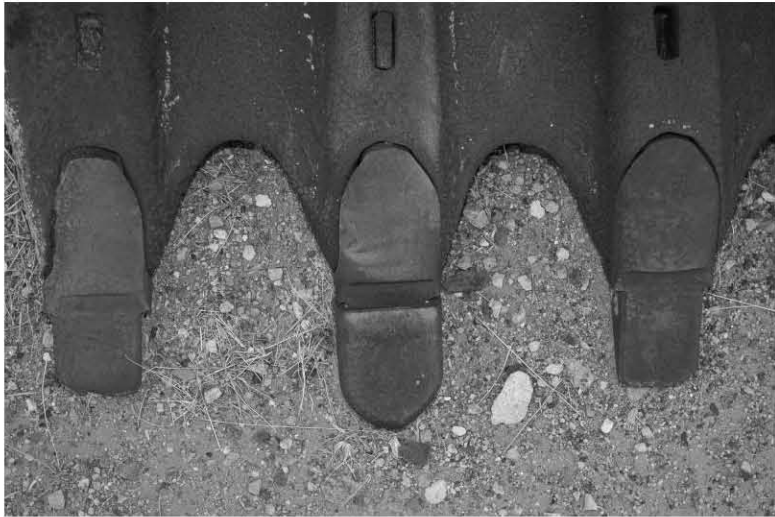
SHANK



SHEAVE WHEEL(s)



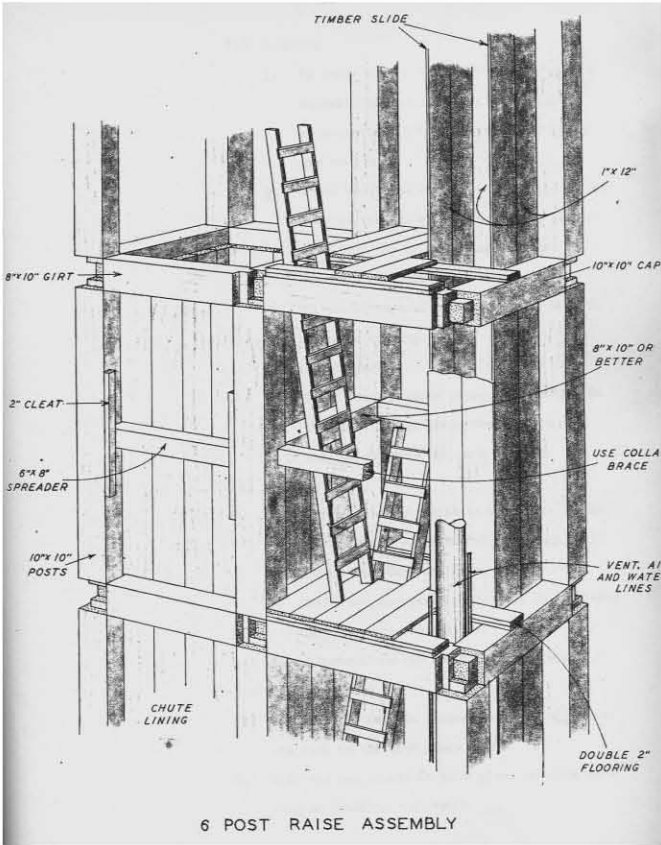
SHOVEL



SHOVEL TEETH



SINKING BUCKET



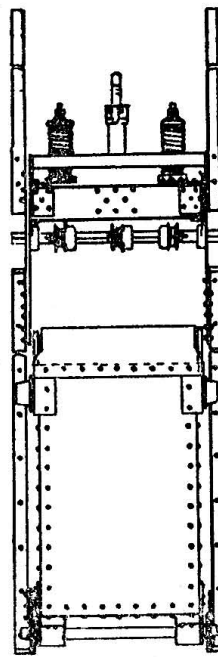
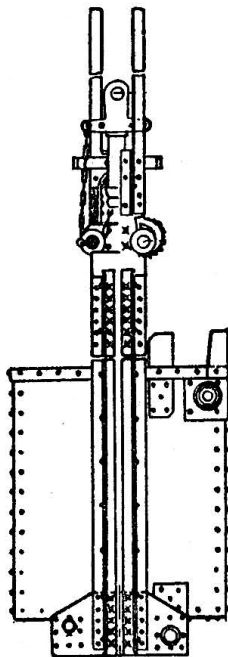
SIX POST



SKEWER



SKIN TO SKIN



SKIP



**SLABS
(HANGING)**

**SLABS
(FALLEN)**

SLAB



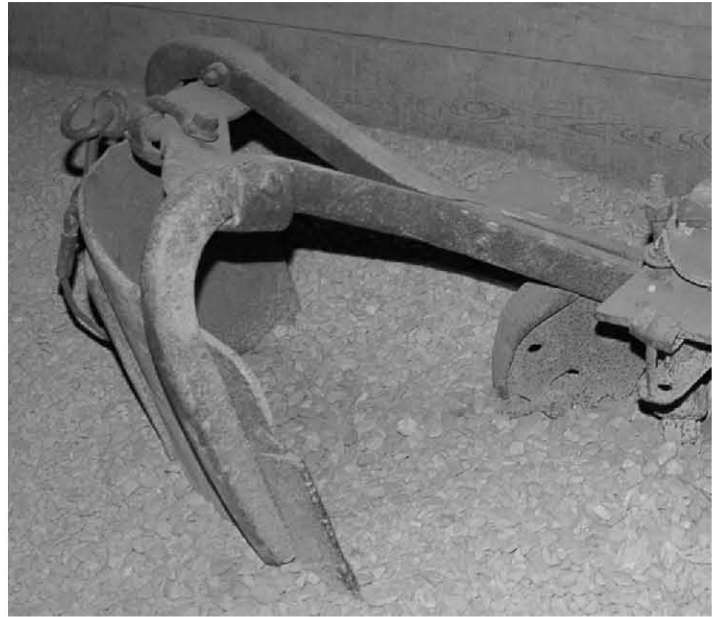
SLING



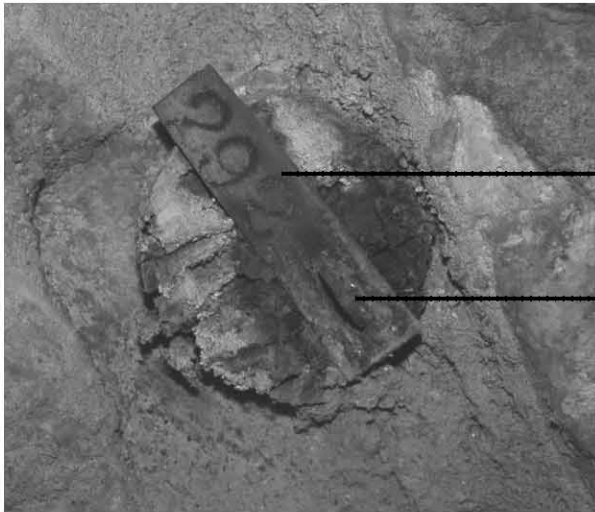
SLUSHER



SLUSHER BUCKET



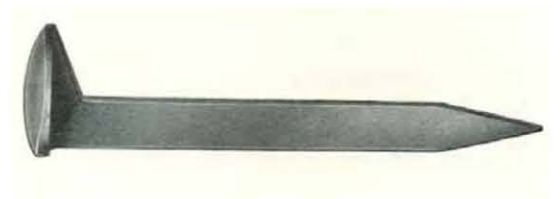
SLUSHER RAKE



SURVEY TAG

SURVEY SPAD

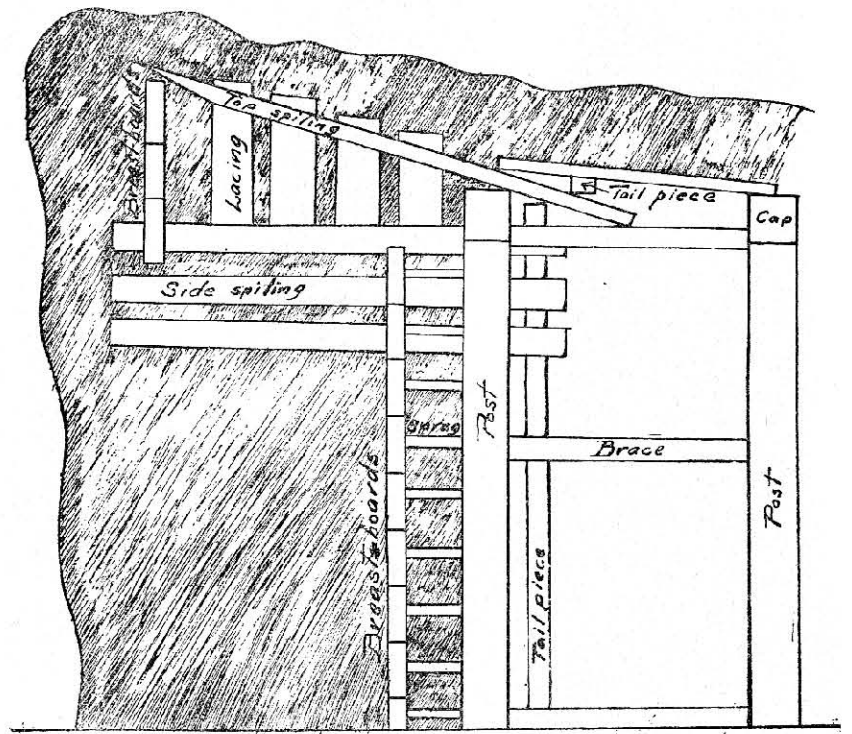
SURVEY SPAD



SPIKE



SPIKE PULLER



SPILING



SPITTER(S)



SPITTER BOARD



SPITTER CAN



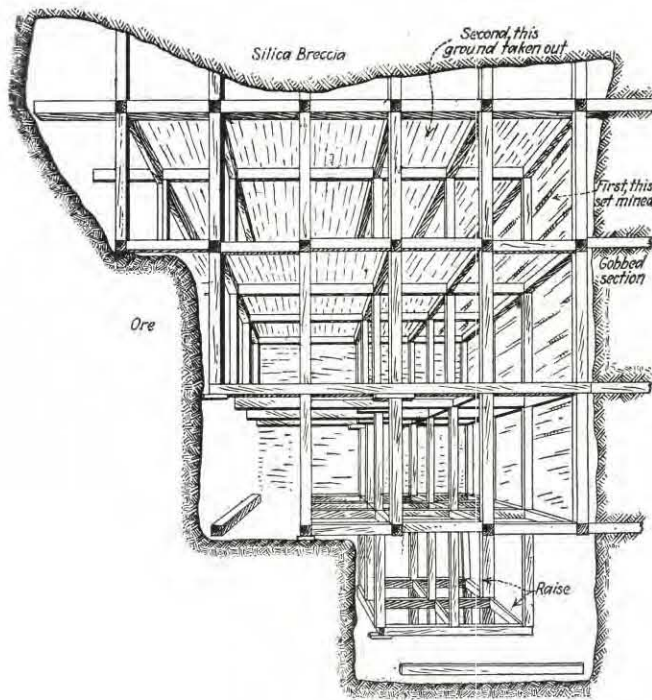
**SPOON
(END ONLY)**



SPREADER



SPREADER SCAB (S)



SQUARESET STOPING



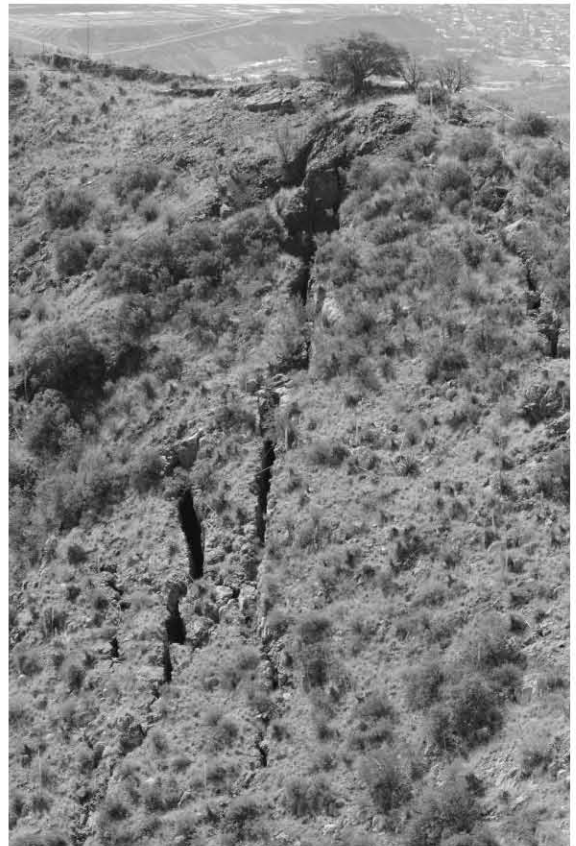
STULL



SWITCH



SWITCH POINT(S)



SUBSIDENCE CRACKS



SWITCH THROW



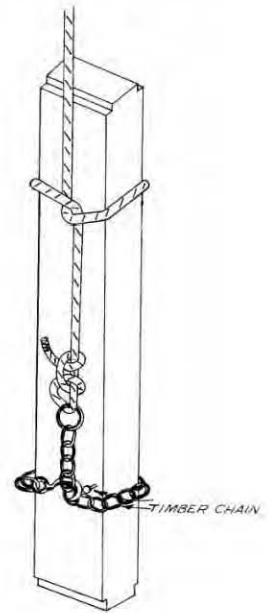
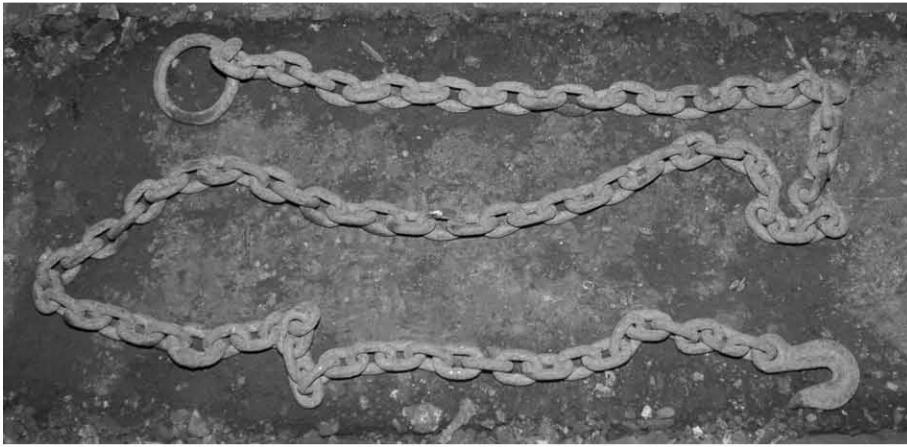
T STULL



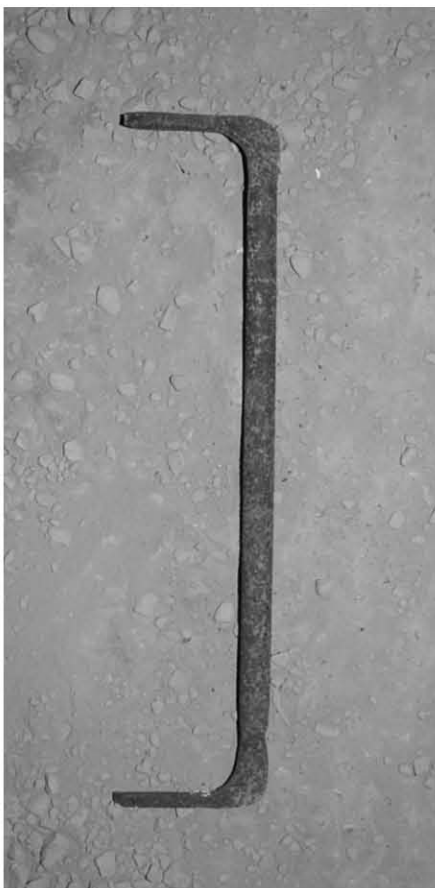
TAIL LIGHT



TIE(S)



TIMBER CHAIN



TIMBER DOG



TIMBER JACK



TIMBER SAW



TIMBER STATION



TIMBER TRUCK(S)



TIMBER YARD



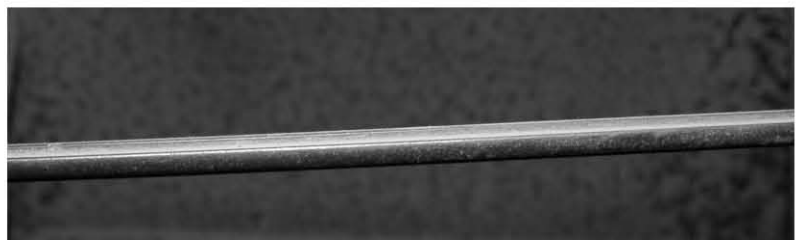
TOILET CAR



TOOL CAR



TRACK BOLT*



TROLLEY



TROLLEY HANGER



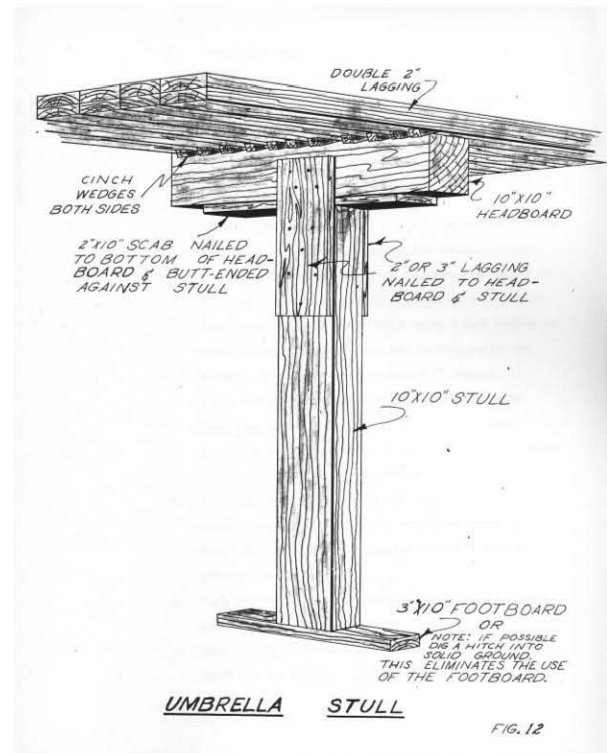
TROLLEY POLE



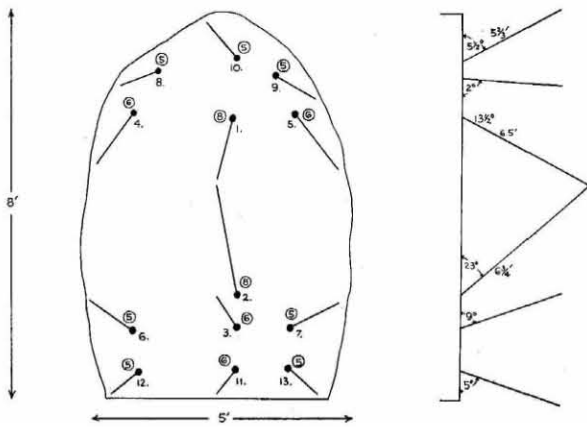
TRUCKS



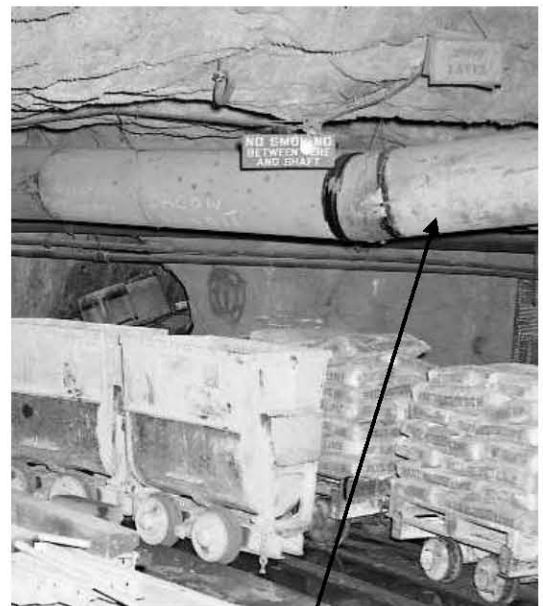
TUGGER



UMBRELLA STULL



V CUT



VENT PIPE



VERDE CHUTE



WATER DITCH



WATER HOSE



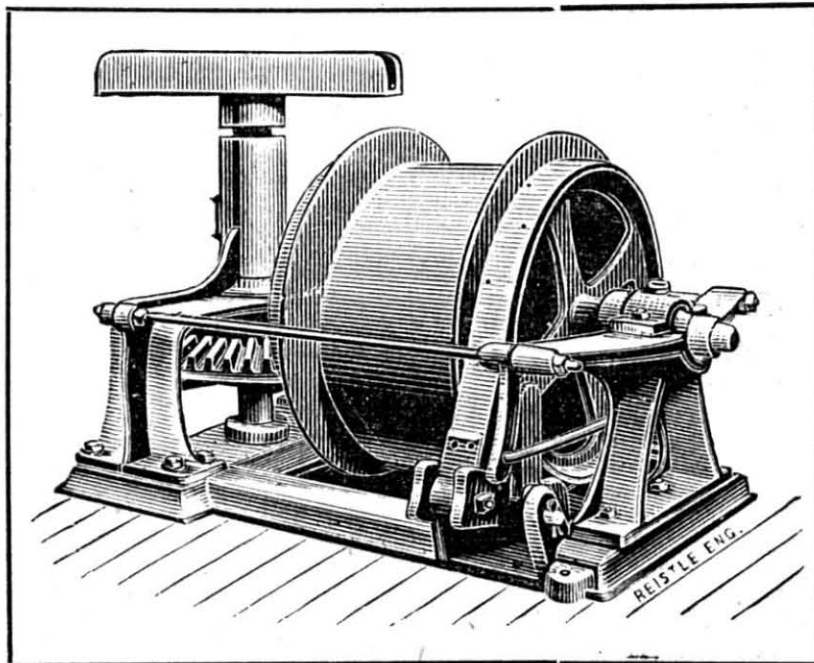
WATER NEEDLE



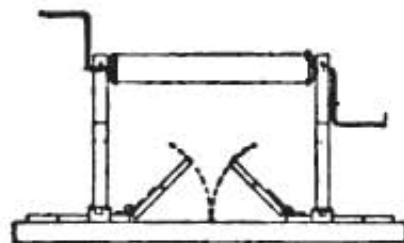
WEDGE



WHEAT LAMP



WHIM*



WINDLASS*